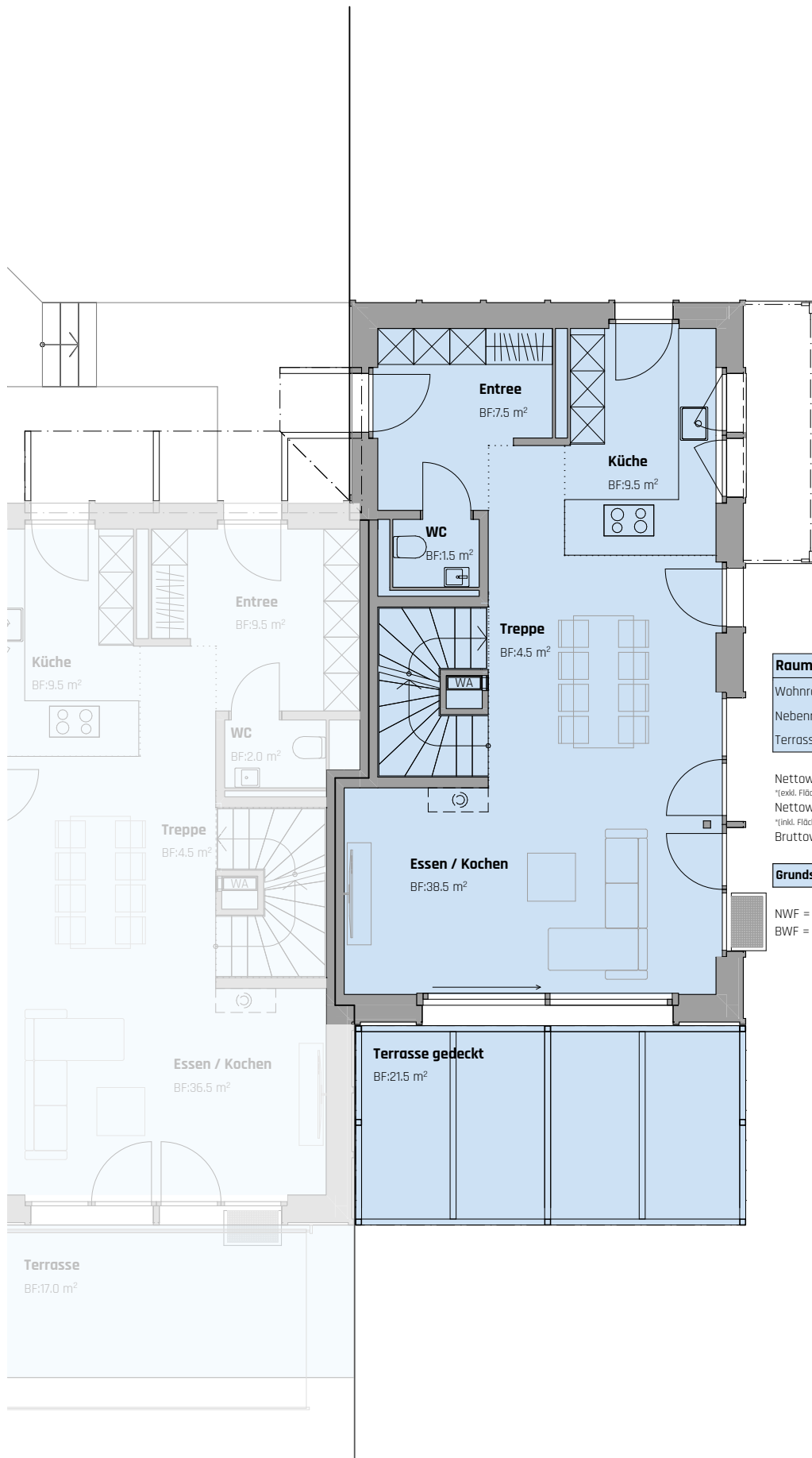


NWF = 4.5 m<sup>2</sup>  
 BWF = 48.5 m<sup>2</sup>

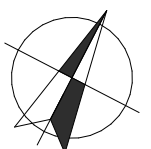


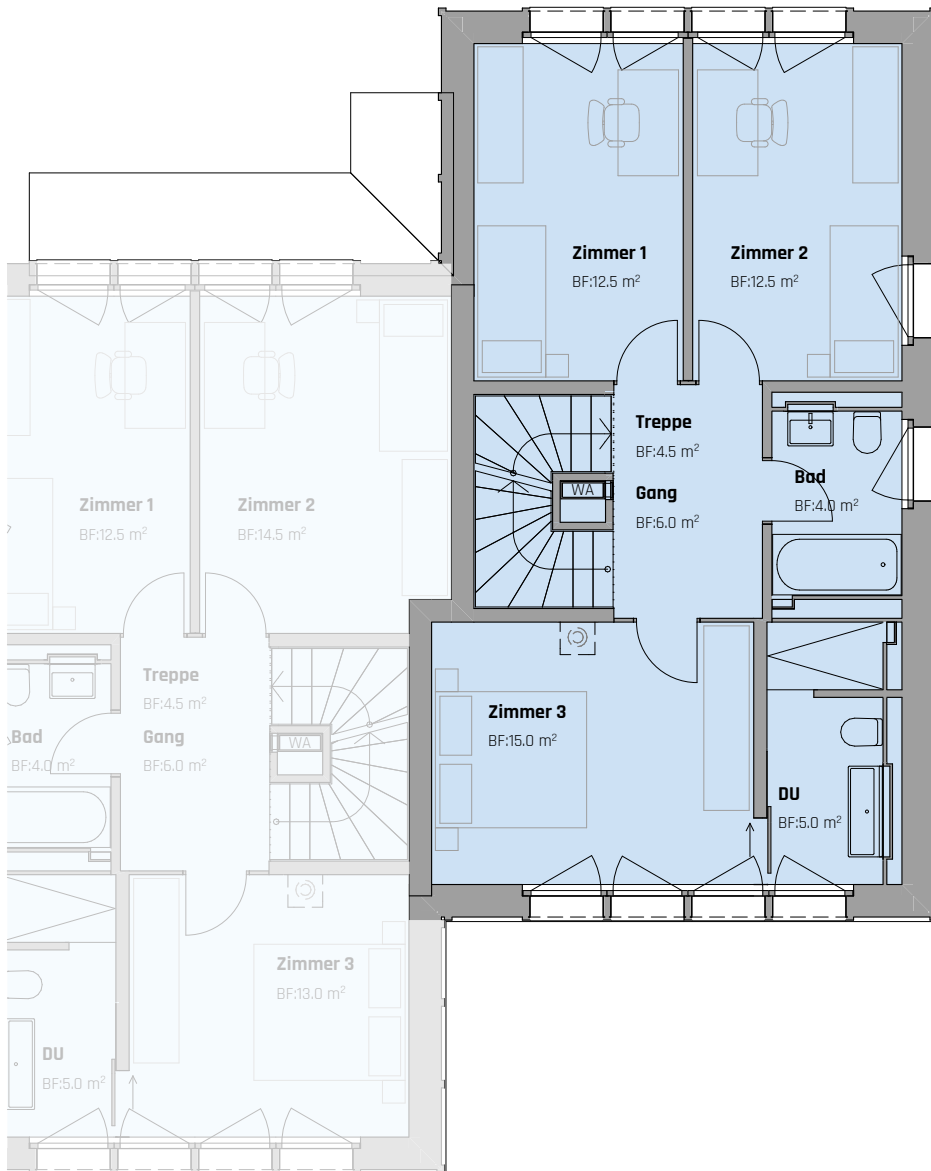
Raumflächen	Haus F
Wohnräume / Gang UG (NWF)	165.0 m <sup>2</sup>
Nebenräume (Technik, Abstell UG)	41.5 m <sup>2</sup>
Terrasse	21.5 m <sup>2</sup>

Nettowohnfläche (NWF) = 165.0 m<sup>2</sup>\*  
\*exkl. Flächen unter 1.5m RH  
 Nettowohnfläche (NWF) Total = 178.0 m<sup>2</sup>\*  
\*inkl. Flächen unter 1.50m RH  
 Bruttowohnfläche (BWF) = 240.0 m<sup>2</sup>

Grundstücksfläche	273.0 m <sup>2</sup>
-------------------	----------------------

NWF = 61.5 m<sup>2</sup>  
 BWF = 64.5 m<sup>2</sup>





NWF = 59.5 m<sup>2</sup>  
 BWF = 65.0 m<sup>2</sup>

