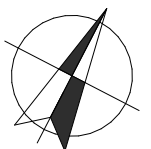
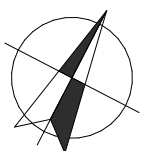
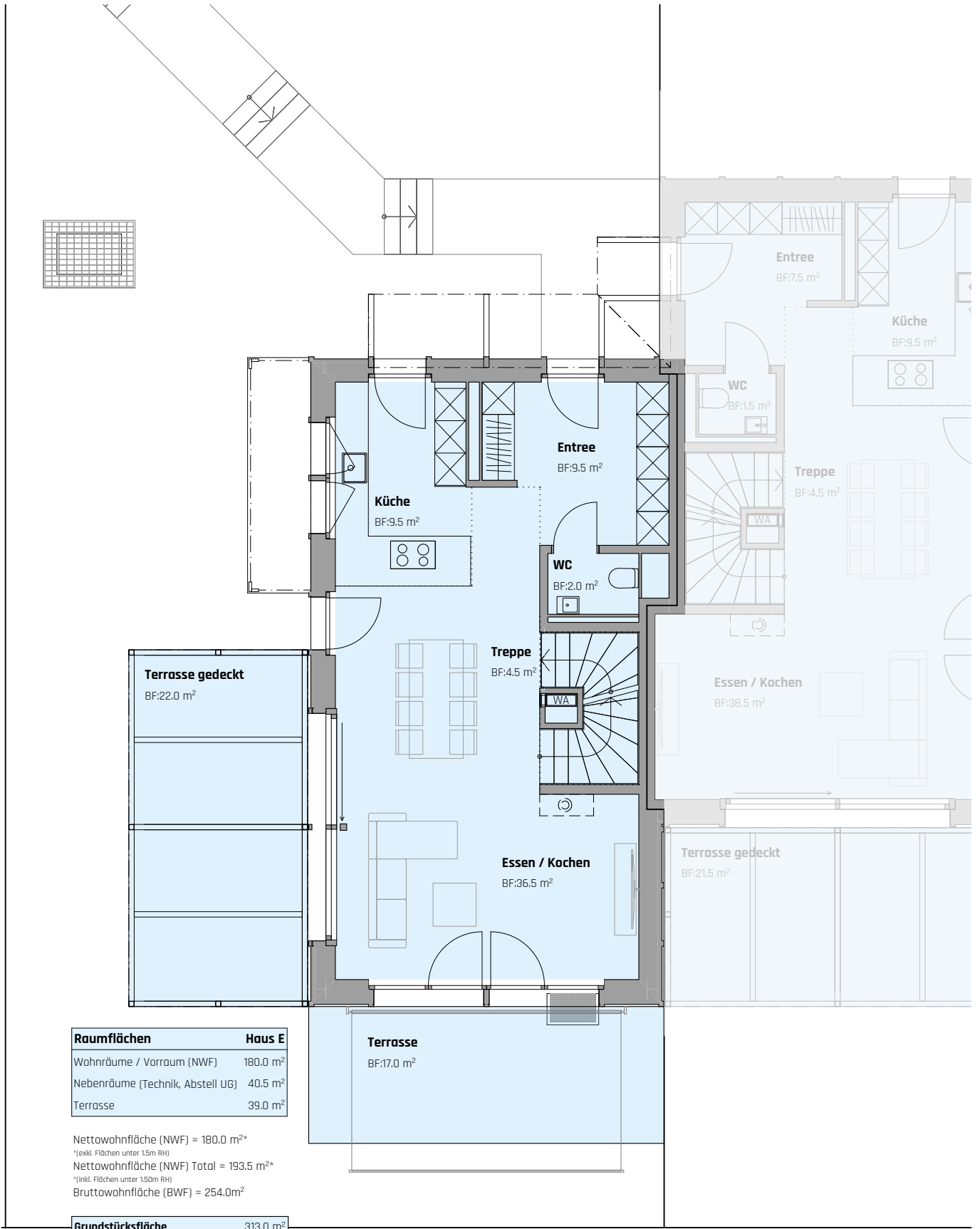


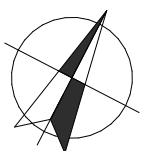
NWF = 19.0 m<sup>2</sup>  
 BWF = 62.5m<sup>2</sup>

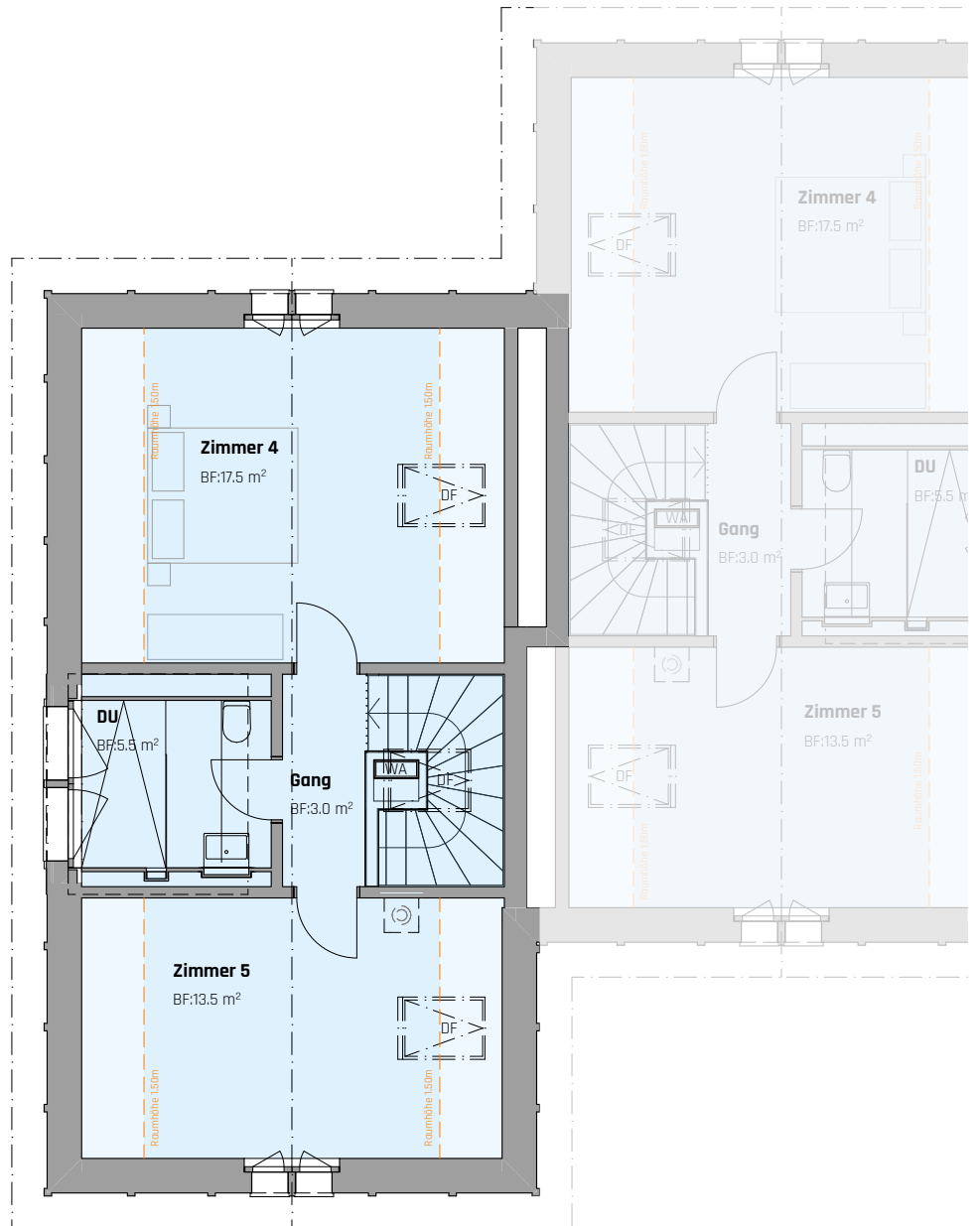






NWF = 59.5 m<sup>2</sup>  
 BWF = 65.0 m<sup>2</sup>





NWF\* = 39.5 m<sup>2</sup>  
 \*(exkl. Flächen unter 1.5m RH)  
 BWF = 62.0m<sup>2</sup>  
 \*(inkl. Flächen unter 1.5m RH)

