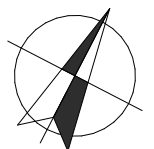
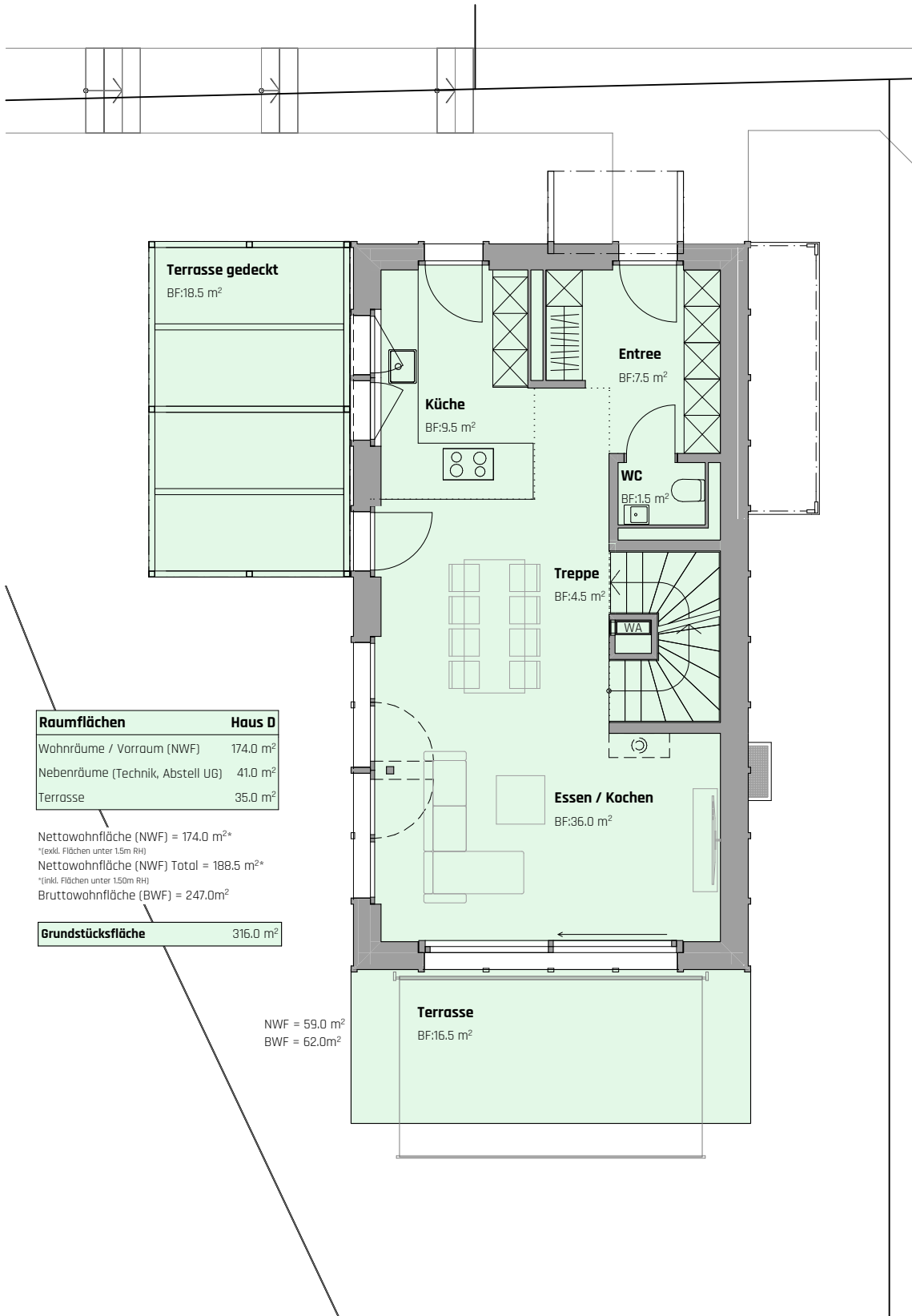


NWF = 16.0 m²
 BWF = 60.0m²





Raumflächen	Haus D
Wohnräume / Vorraum (NWF)	174.0 m ²
Nebenräume (Technik, Abstell UG)	41.0 m ²
Terrasse	35.0 m ²

Nettowohnfläche (NWF) = 174.0 m²*

* (exkl. Flächen unter 1.5m RH)

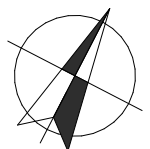
Nettowohnfläche (NWF) Total = 188.5 m²*

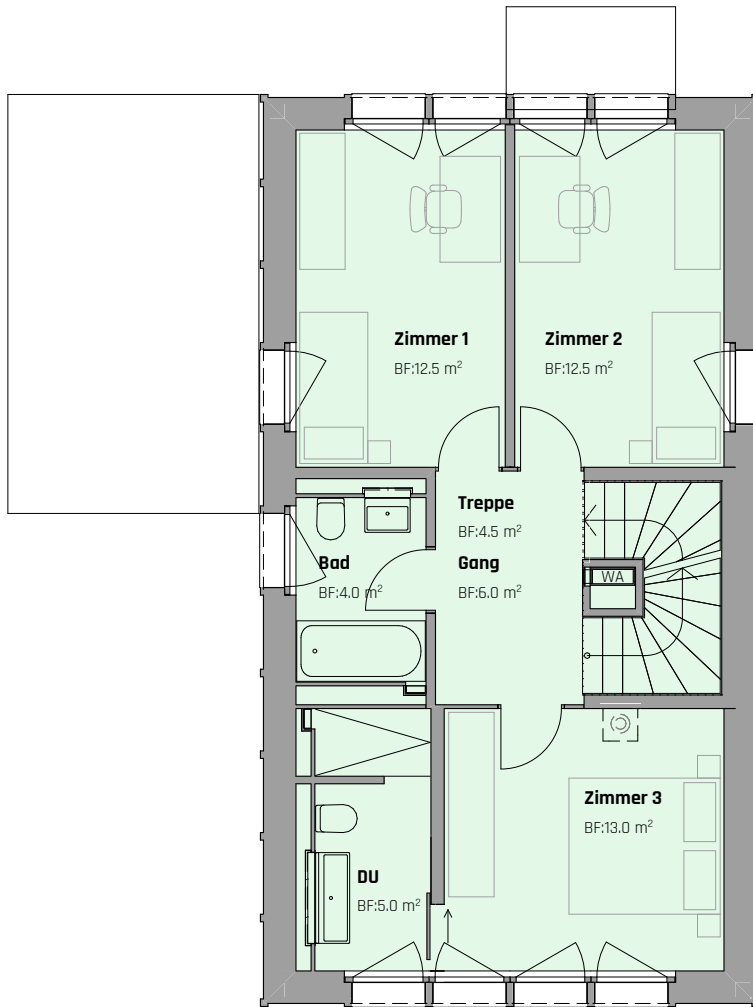
* (inkl. Flächen unter 1.50m RH)

Bruttowohnfläche (BWF) = 247.0m²

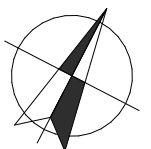
Grundstücksfläche	316.0 m ²
--------------------------	----------------------

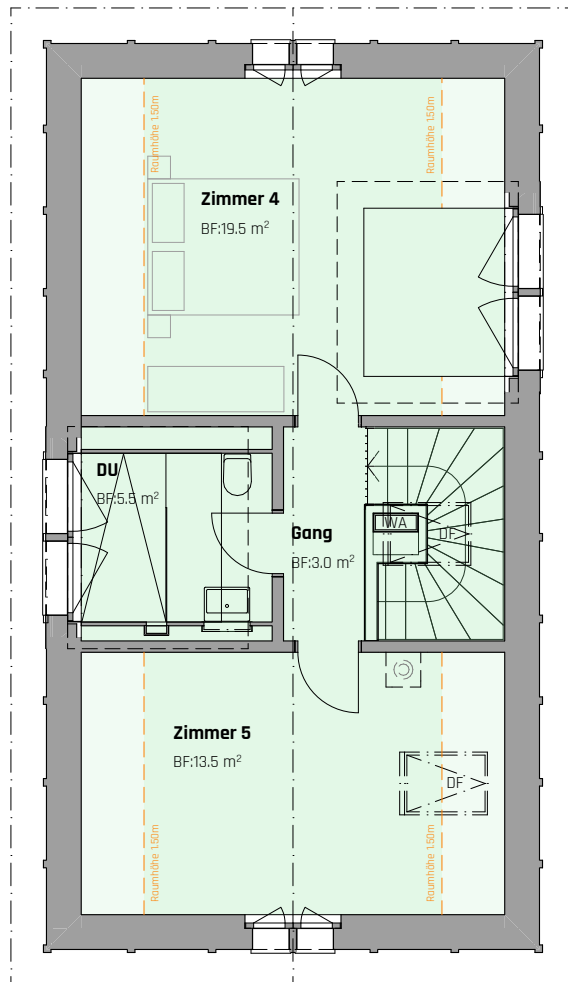
NWF = 59.0 m²
BWF = 62.0m²





NWF = 57.5 m²
 BWF = 63.0 m²





NWF* = 41.5 m²
 *(exkl. Flächen unter 1.5m RH)
 BWF = 62.0m²
 *(inkl. Flächen unter 1.5m RH)

