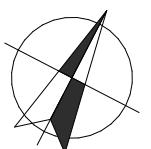
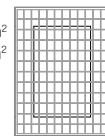


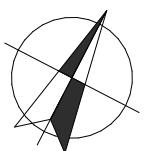
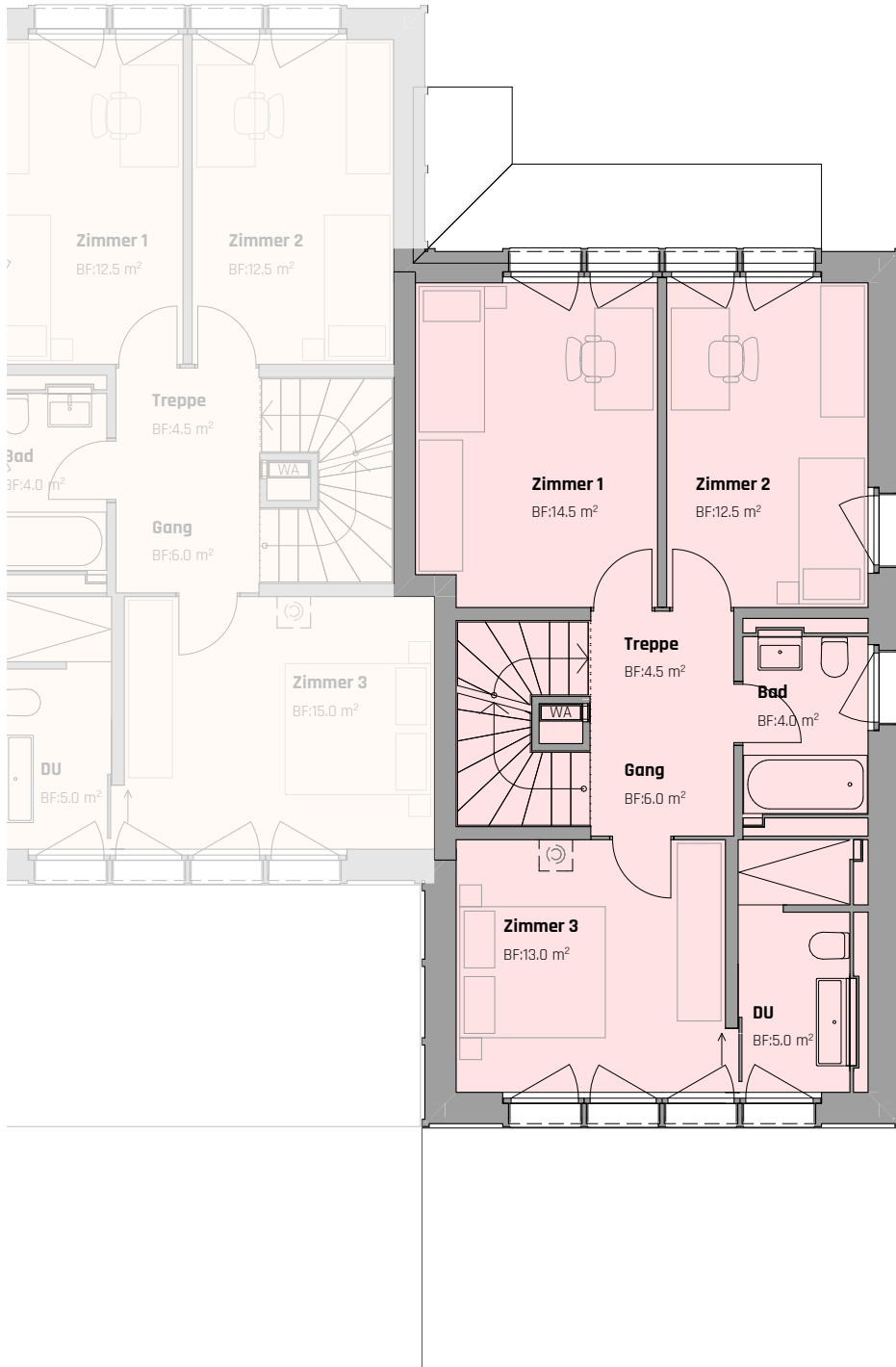
Raumflächen	Haus C
Wohnräume / Vorraum (NWF)	179.0 m <sup>2</sup>
Nebenräume (Technik, Abstell UG)	42.5 m <sup>2</sup>
Terrasse	20.0 m <sup>2</sup>

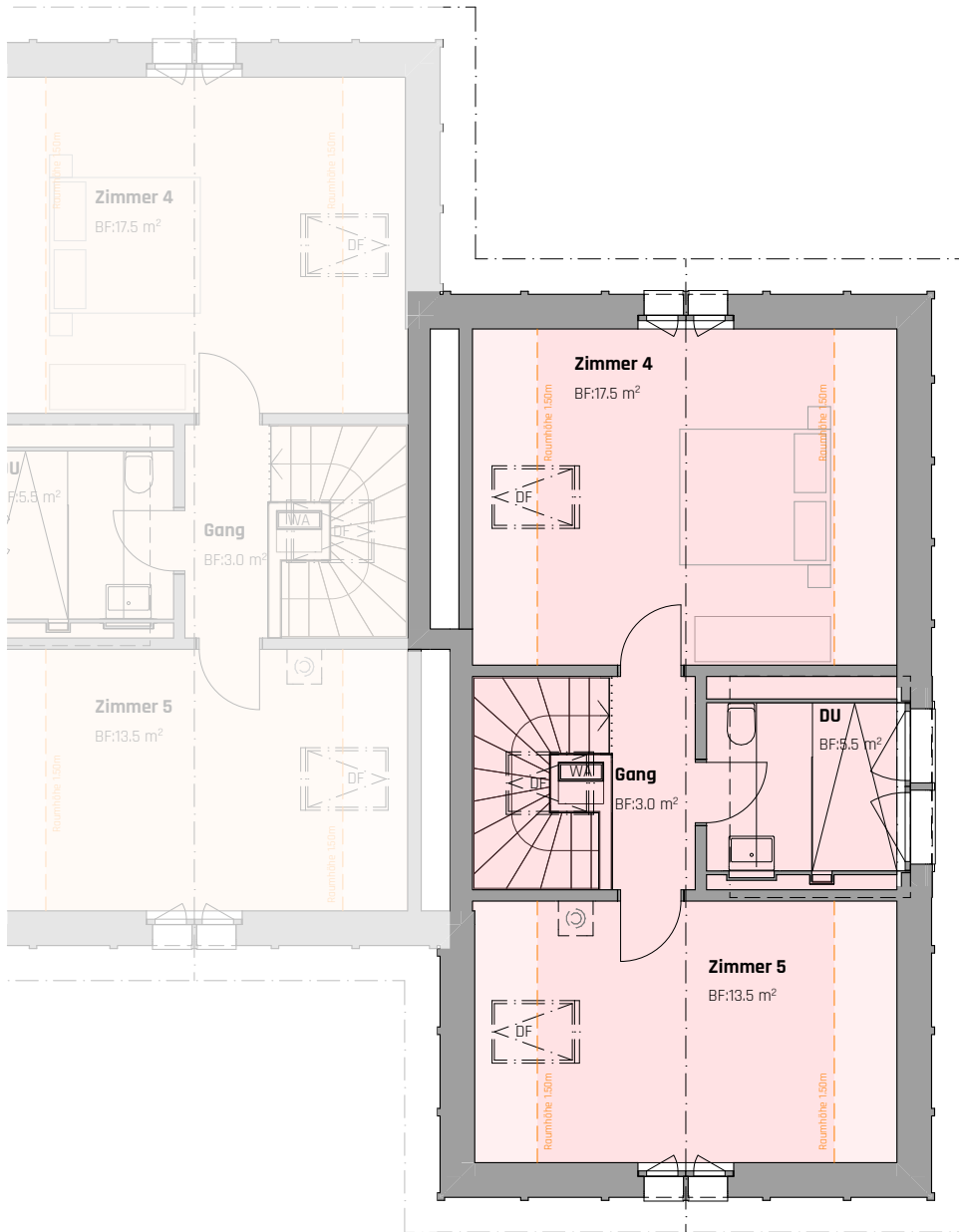
Nettowohnfläche (NWF) = 179.0 m<sup>2</sup>\*  
\*exkl. Flächen unter 1.5m RH  
 Nettowohnfläche (NWF) Total = 192.5 m<sup>2</sup>\*  
\*inkl. Flächen unter 1.50m RH  
 Bruttowohnfläche (BWF) = 256.0m<sup>2</sup>

Grundstücksfläche	277.5 m <sup>2</sup>
-------------------	----------------------

NWF = 62.0 m<sup>2</sup>  
 BWF = 64.5 m<sup>2</sup>







NWF\* = 39,5,0 m<sup>2</sup>  
 \*(exkl. Flächen unter 1,5m RH)  
 BWF = 62,0m<sup>2</sup>  
 \*(inkl. Flächen unter 1,5m RH)

