

Bauherr: Anlagestiftung Swiss Life c/o Swiss Life AG General-Guisan-Quai 40 8002 Zürich

Objekt:
 WITIKONERSTRASSE 289
 8002 ZÜRICH

Rev.:

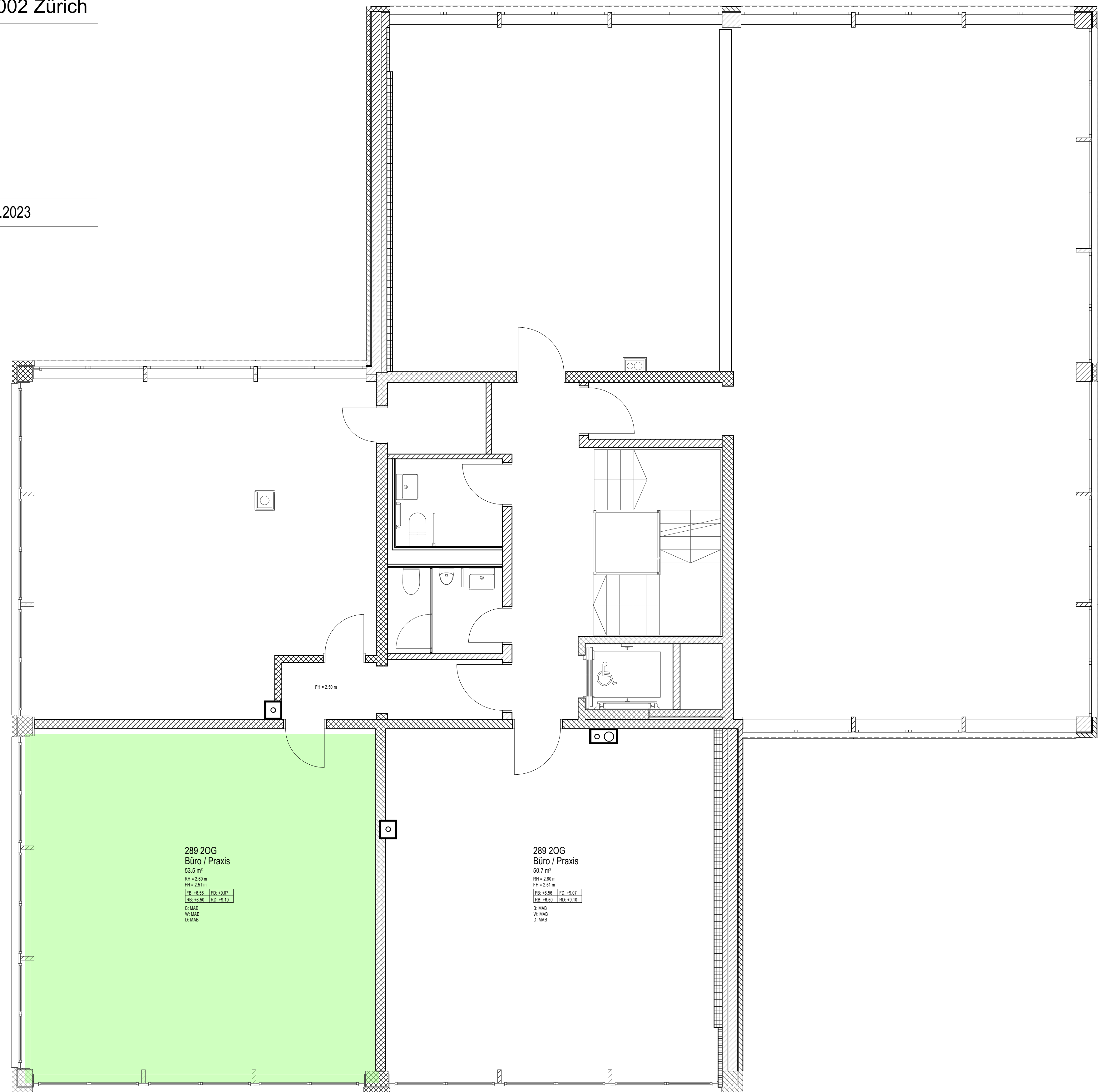
Plan: 2. OBERGESCHOSS

Format: A1

Mst. 1: 50

Gez.: planzeichner.ch

Datum: 24.08.2023



289 20G
 Büro / Praxis
 53.5 m²
 RW = 2.80 m
 FH = 2.51 m
 FB = +0.56 FD = +0.07
 EB = +0.50 HD = +0.10
 B: MAB
 W: MAB
 D: MAB

289 20G
 Büro / Praxis
 50.7 m²
 RW = 2.80 m
 FH = 2.51 m
 FB = +0.56 FD = +0.07
 EB = +0.50 HD = +0.10
 B: MAB
 W: MAB
 D: MAB

