



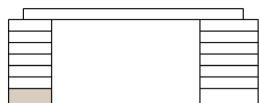


EG.W03 - 3.5-ZIMMER

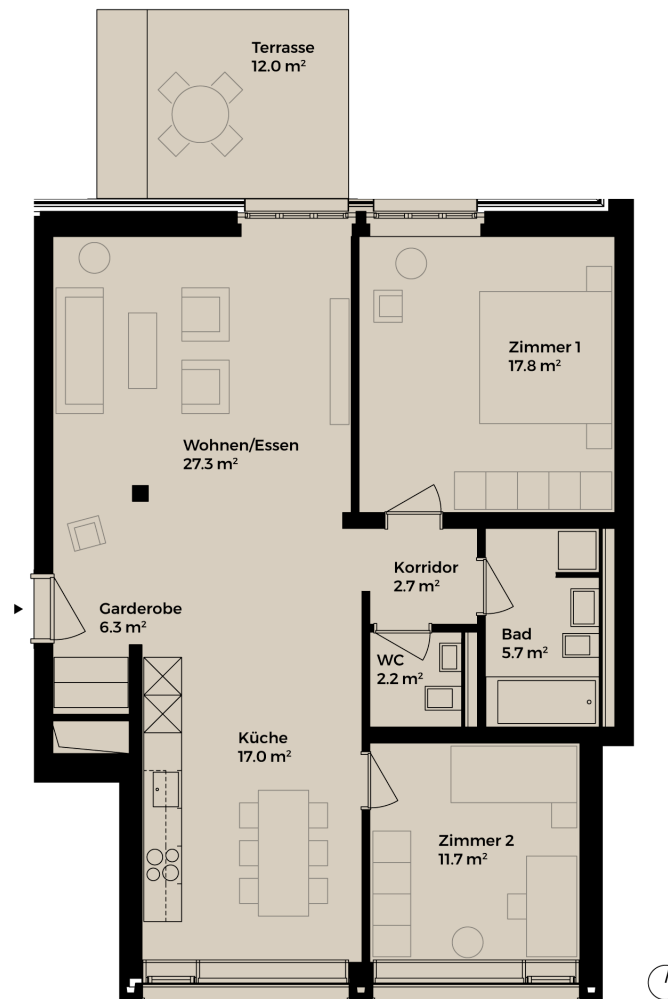
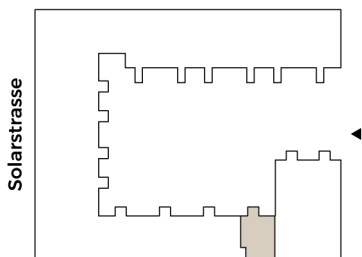
EG
SOLARSTRASSE 9

Wohnfläche: 90.3 m²

- Boden:
Parkett 
- Nasszelle(n):
grau & rosa  
- Küche:
Farbkonzept 2 



Sulzerallee



Stand September 2020: Alle Angaben sind unverbindlich. Änderungen bleiben bis zur Bauvollendung vorbehalten.