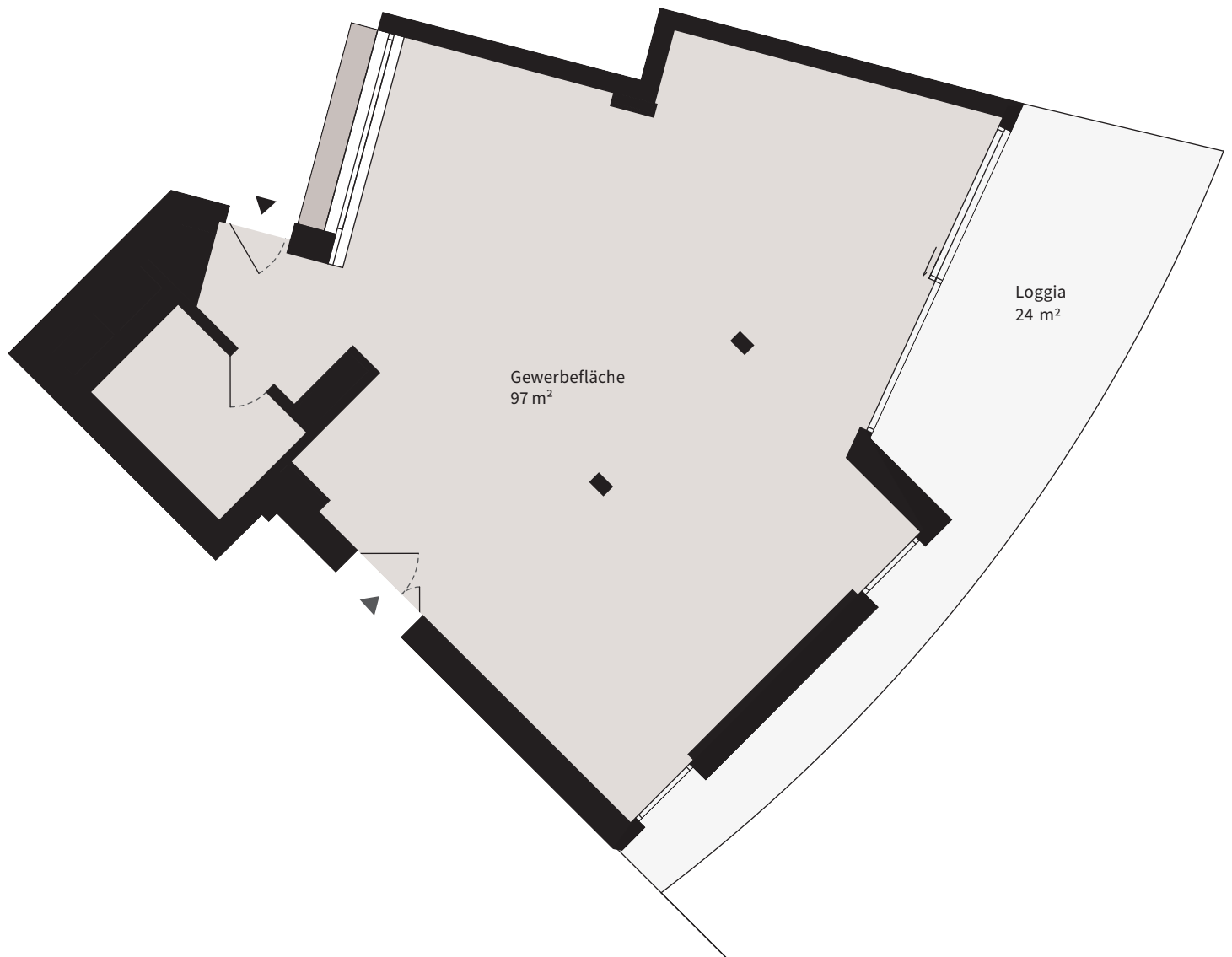


# TINGUELYWEG 1

## BERN BRÜNNEN

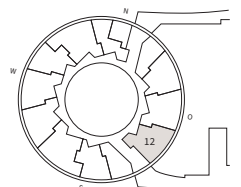
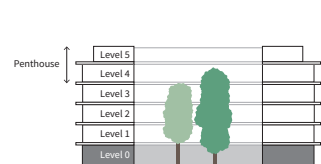


Gewerbenummer: 0-12  
Etage: Erdgeschoss  
Fläche: ca. 97 m<sup>2</sup>  
Loggia: ca. 24 m<sup>2</sup>



0 1 2 5 m

Massstab 1:100 (A4)



Änderungen bleiben bis zur Bauvollendung vorbehalten.