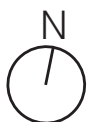
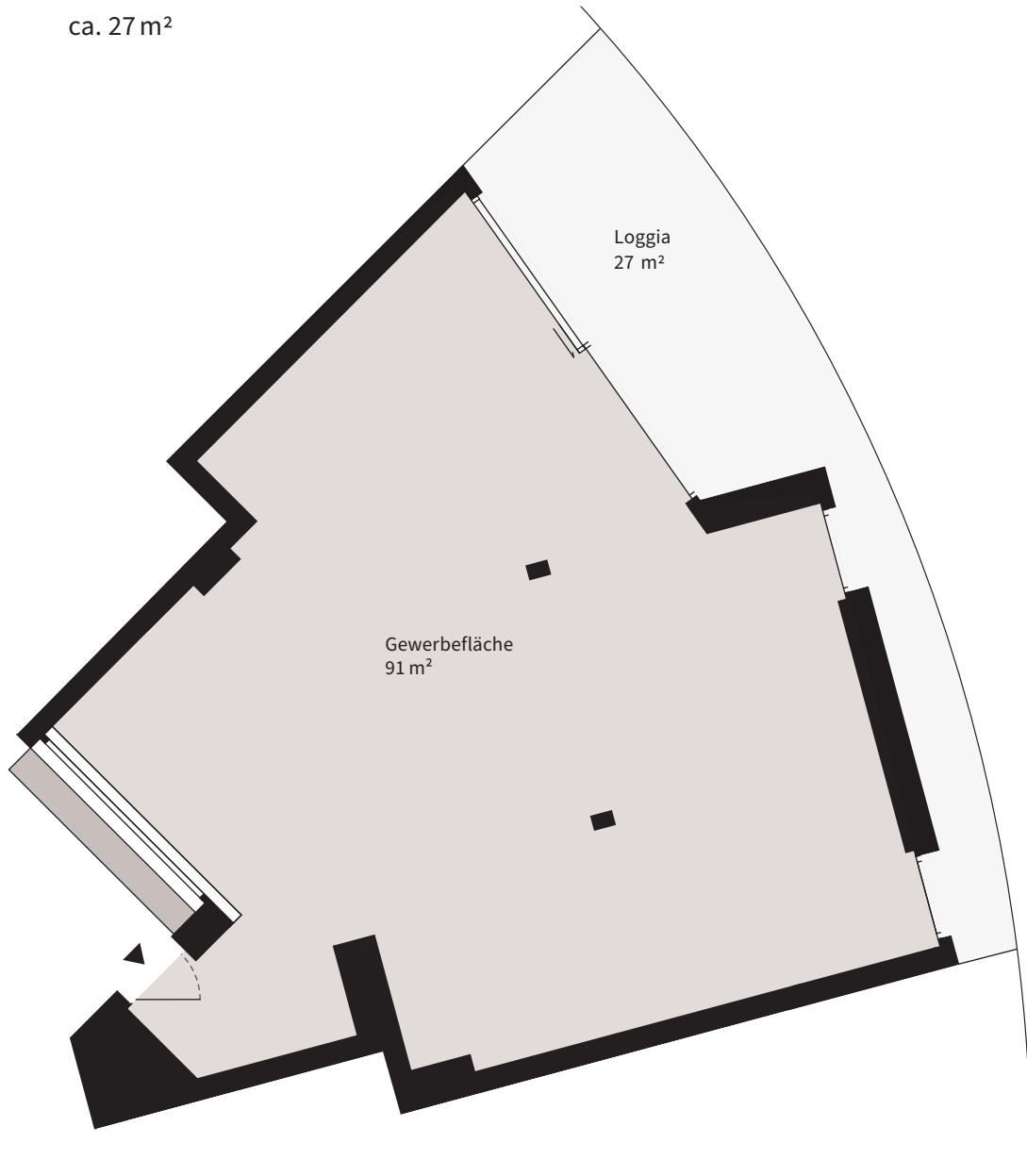


TINGUELYWEG 1

BERN BRÜNNEN

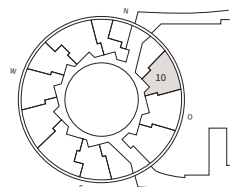
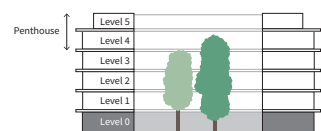


Gewerbenummer: 0-10
Etage: Erdgeschoss
Fläche: ca. 91 m²
Loggia: ca. 27 m²



0 1 2 5 m

Massstab 1:100 (A4)



Änderungen bleiben bis zur Bauvollendung vorbehalten.