

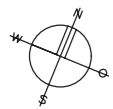
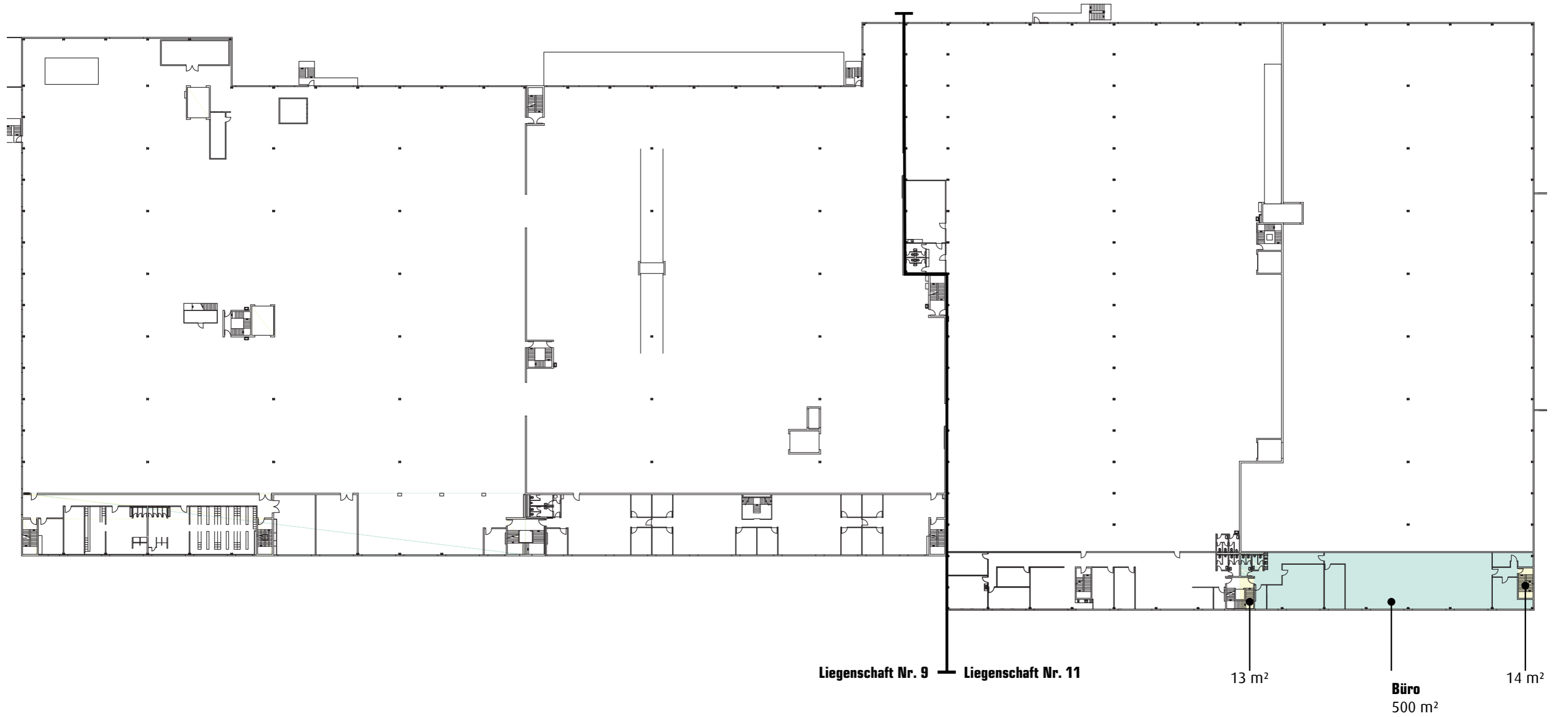


1. Obergeschoss

Industriestrasse 9/11, 4623 Neuendorf

Liegenschaft Nr. 11

	Bürofläche	500 m ²
	Verkehrsfläche	27 m ²



1:1000 (A3)



Vermietung: PRIVERA 

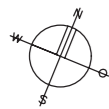
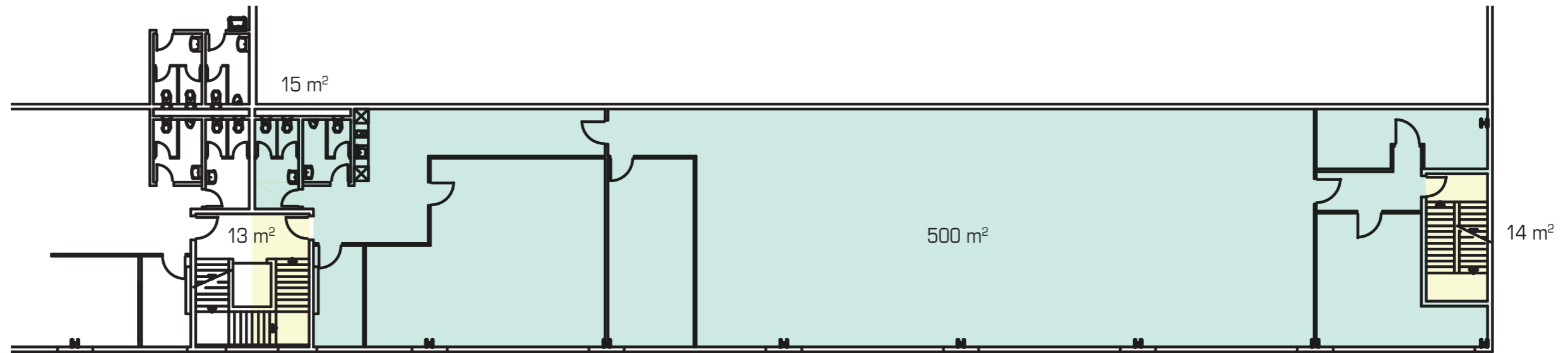
PRIVERA AG, Worbstrasse 142, CH-3073 GÜMLIGEN
Tel. +41 58 715 79 13, E-Mail: tanja.egli@privera.ch

1. Obergeschoss

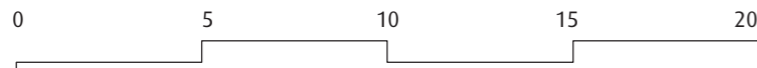
Industriestrasse 9/11, 4623 Neuendorf

Liegenschaft Nr. 11

Büro **500 m²**



1:1000 (A3)







Vermietung: PRIVERA

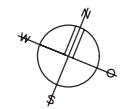
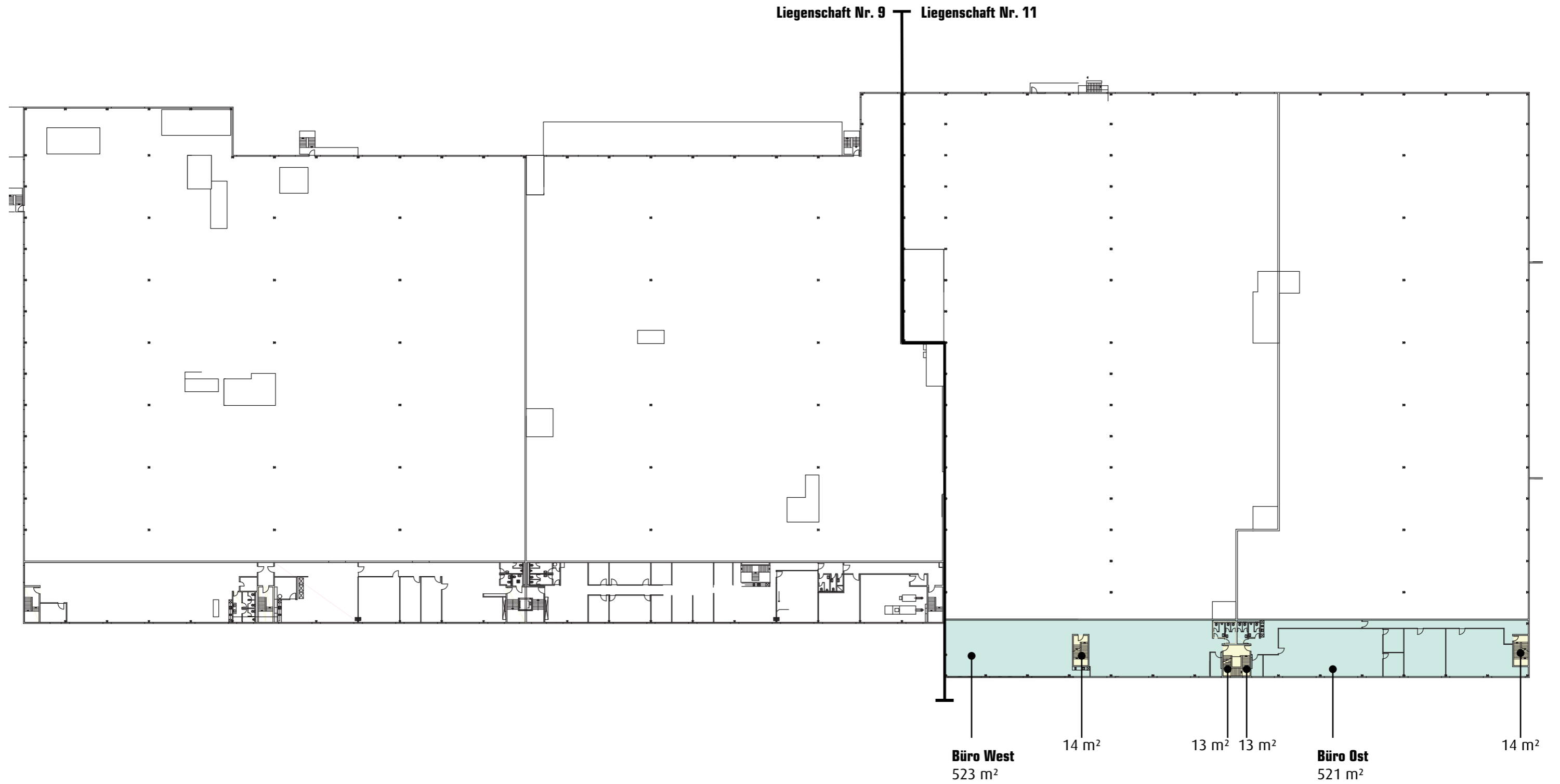
PRIVERA AG, Worbstrasse 142, CH-3073 Gümligen
Tel. +41 58 715 79 13, E-Mail: tanja.egli@privera.ch

2. Obergeschoss

Industriestrasse 9/11, 4623 Neuendorf

Liegenschaft Nr. 11

	Bürofläche West	523 m ²
	Verkehrsfläche	27 m ²
	Bürofläche Büro Ost	521 m ²
	Verkehrsfläche	27 m ²



1:1000 (A3)



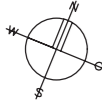
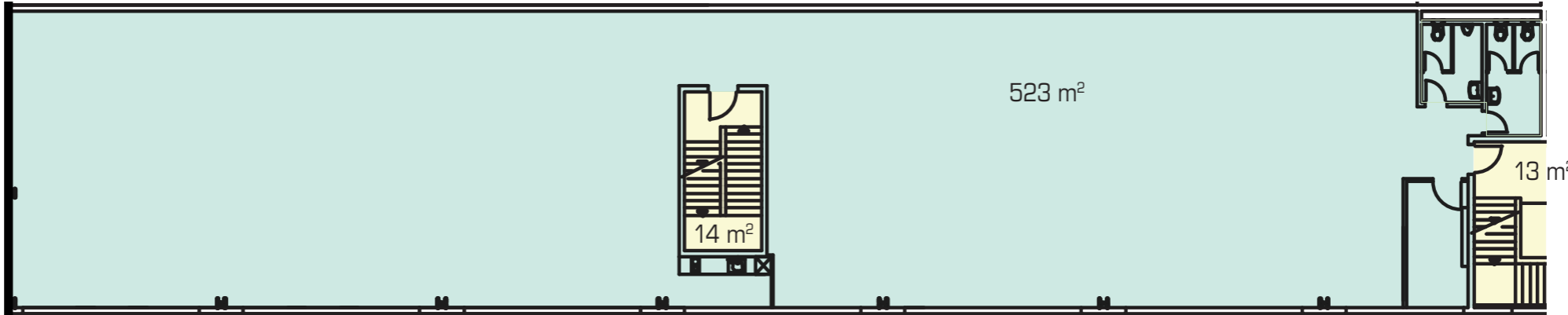
Vermietung: PRIVERA 

PRIVERA AG, Worbstrasse 142, CH-3073 GÜMLIGEN
Tel. +41 58 715 79 13, E-Mail: tanja.egli@privera.ch

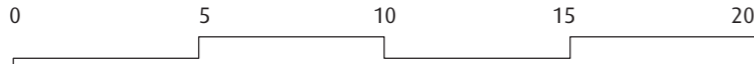
2. Obergeschoss

Industriestrasse 9/11, 4623 Neuendorf

Liegenschaft Nr. 11
Büro West **523 m²**



1:1000 (A3)



Vermietung: PRIVERA

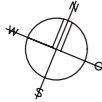
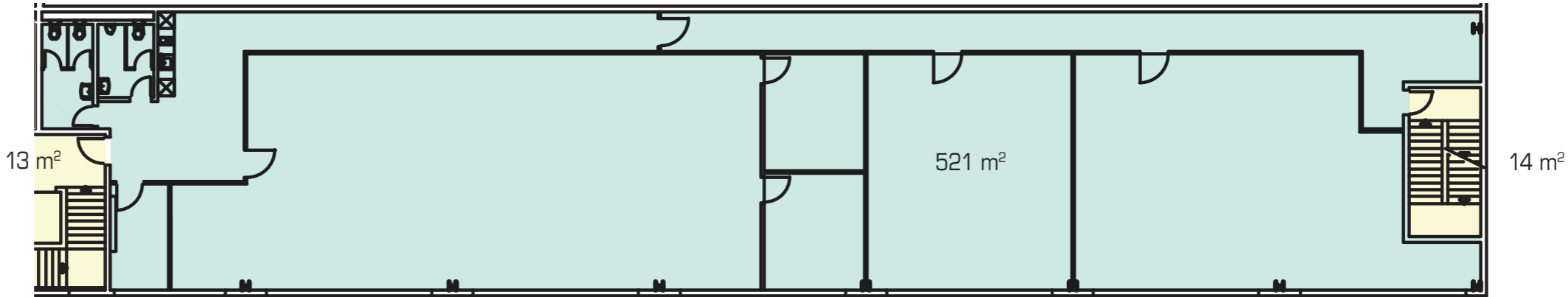
PRIVERA AG, Worbstrasse 142, CH-3073 GÜMLIGEN
Tel. +41 58 715 79 13, E-Mail: tanja.egli@privera.ch

2. Obergeschoss

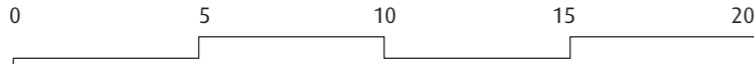
Industriestrasse 9/11, 4623 Neuendorf

Liegenschaft Nr. 11

Büro Ost **521 m²**



1:1000 (A3)



Vermietung: PRIVERA

PRIVERA AG, Worbstrasse 142, CH-3073 GÜMLIGEN
Tel. +41 58 715 79 13, E-Mail: tanja.egli@privera.ch

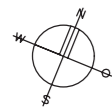
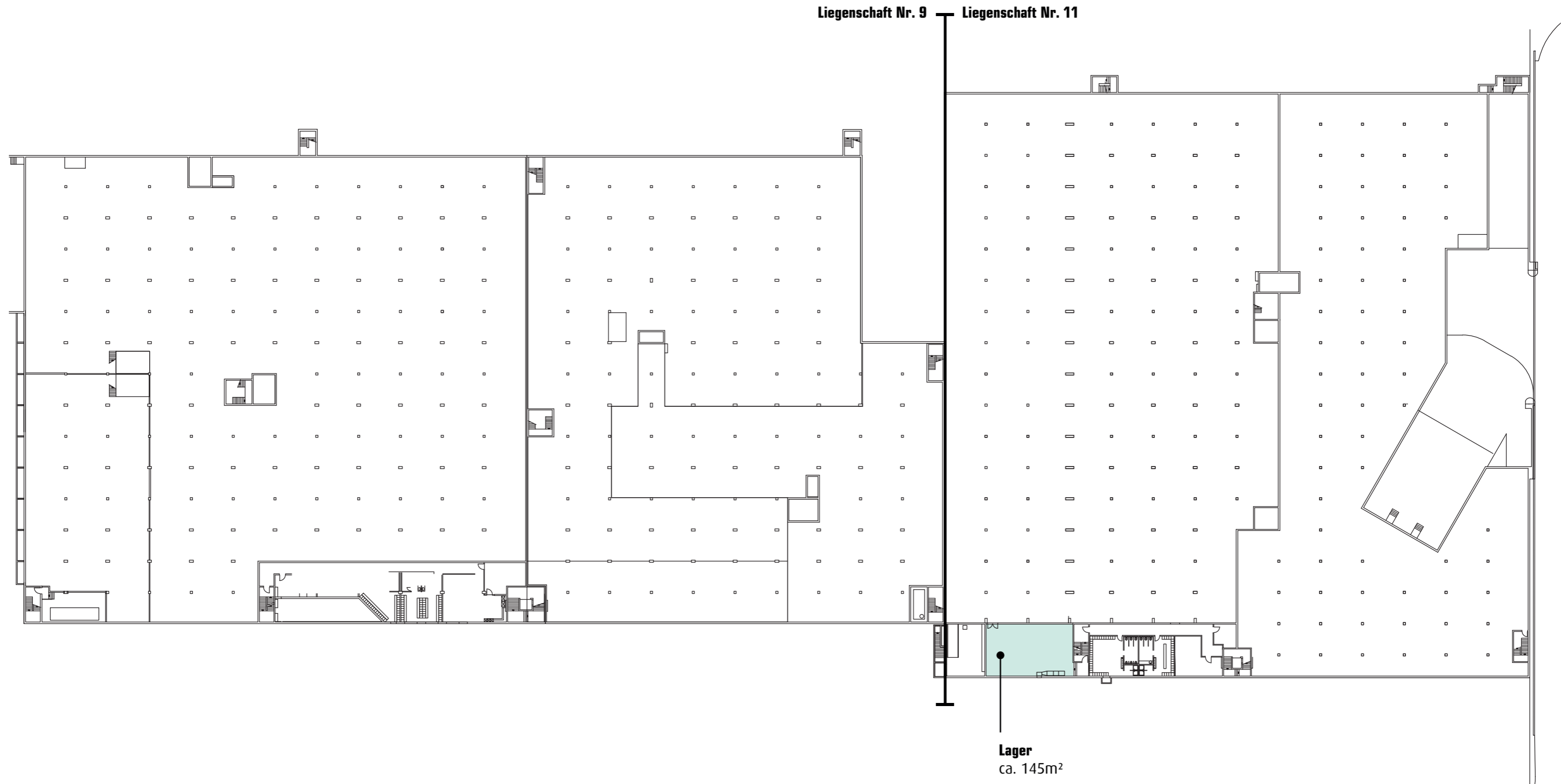
1. Untergeschoss

Industriestrasse 9/11, 4623 Neuendorf

Liegenschaft Nr. 11

■ Lager

ca. 145 m²



1:1000 (A3)



Vermietung: PRIVERA

PRIVERA AG, Worbstrasse 142, CH-3073 GÜMLIGEN
Tel. +41 58 715 79 13, E-Mail: tanja.egli@privera.ch

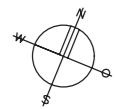
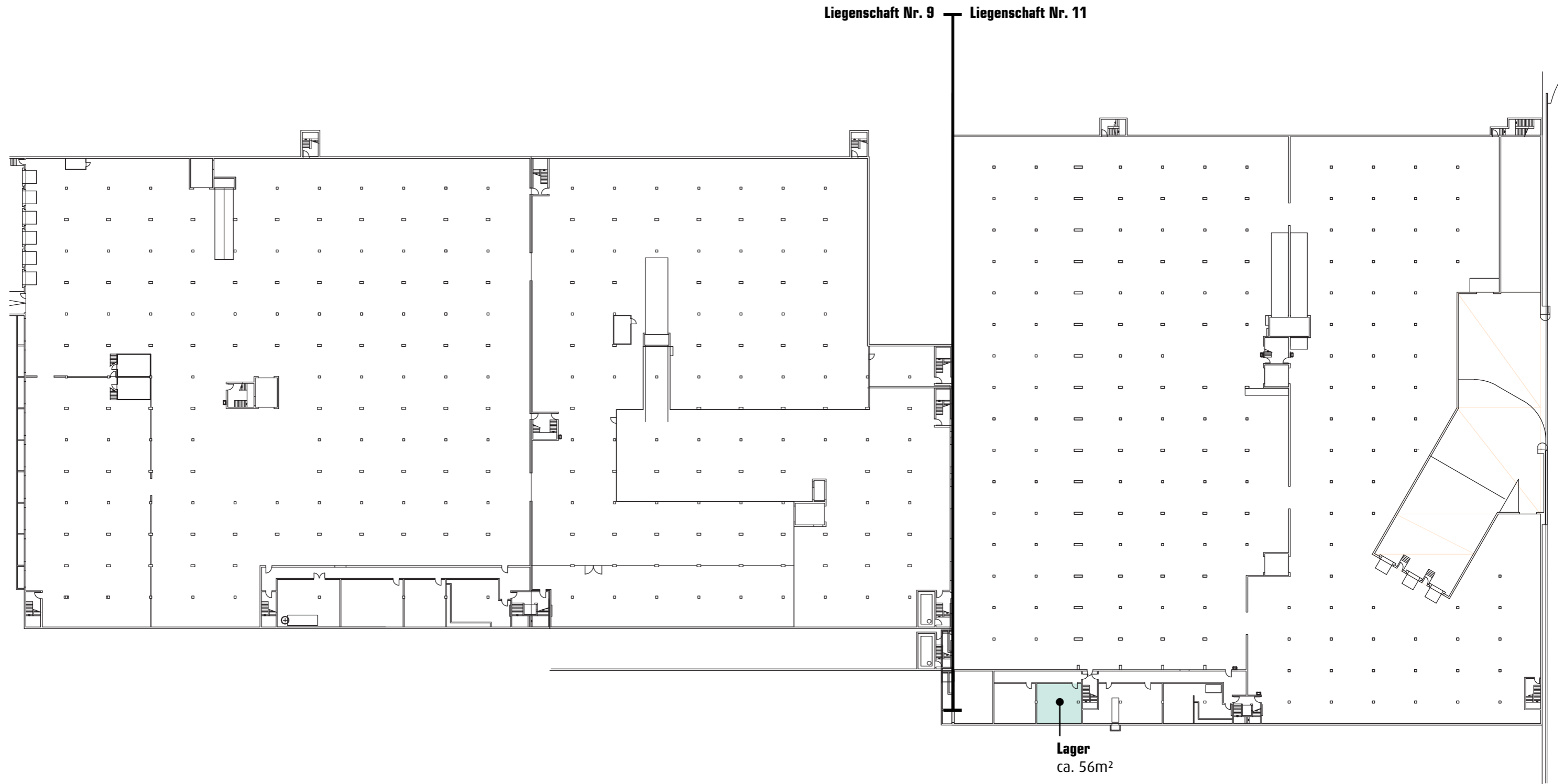
2. Untergeschoss

Industriestrasse 9/11, 4623 Neuendorf

Liegenschaft Nr. 11

■ Lager

ca. 56 m²



1:1000 (A3)



Vermietung: PRIVERA

PRIVERA AG, Worbstrasse 142, CH-3073 GÜMLIGEN
Tel. +41 58 715 79 13, E-Mail: tanja.egli@privera.ch