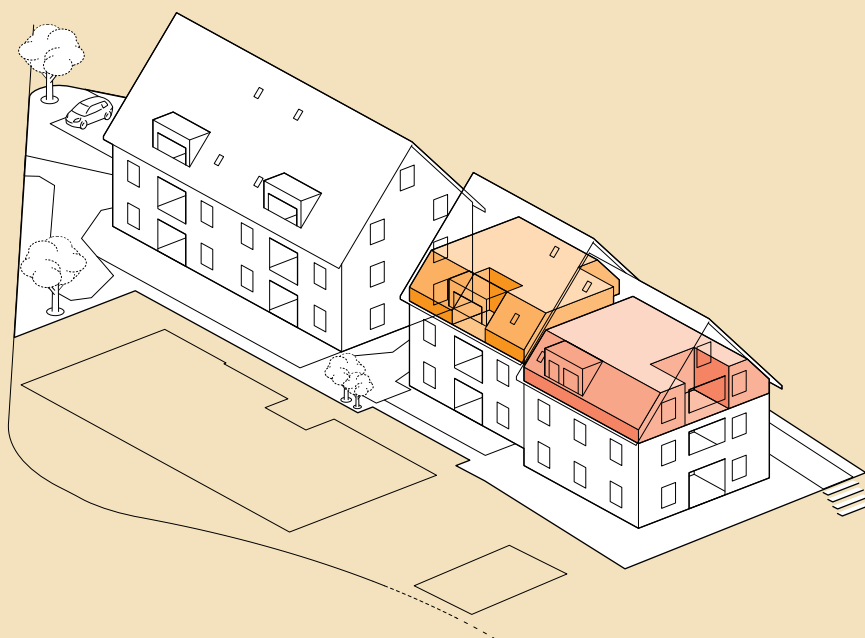




STERNEN
GUTENSWIL

Haus B

I. DACHGESCHOSS



4½-ZIMMER-WOHNUNG

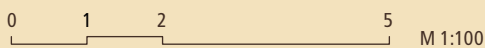
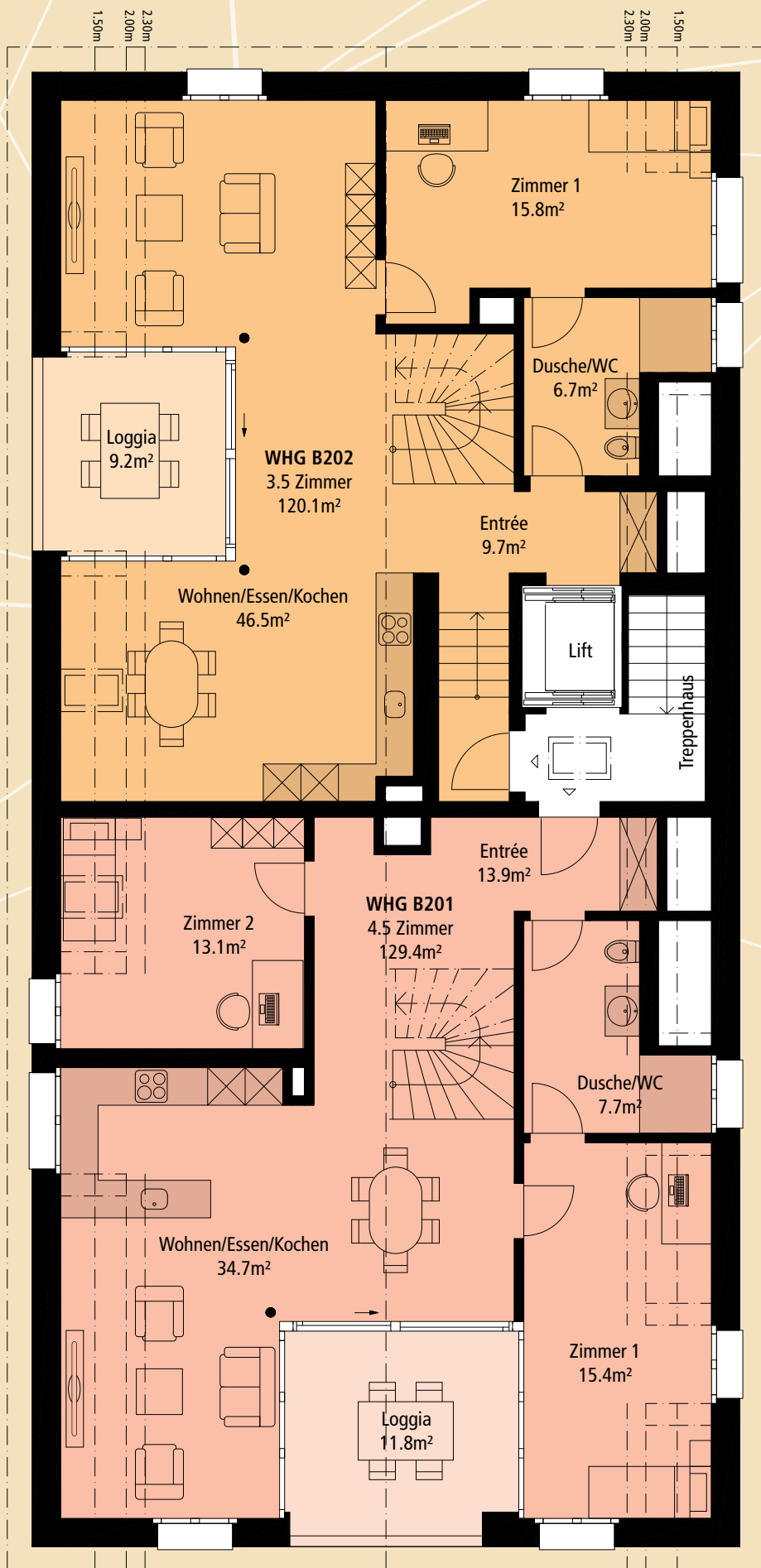
B201 ■

Bruttowohnfläche	129.4 m ²
Loggia	11.8 m ²
Keller	13.0 m ²

3½-ZIMMER-WOHNUNG

B202 ■

Bruttowohnfläche	120.1 m ²
Loggia	9.2 m ²
Keller	14.5 m ²

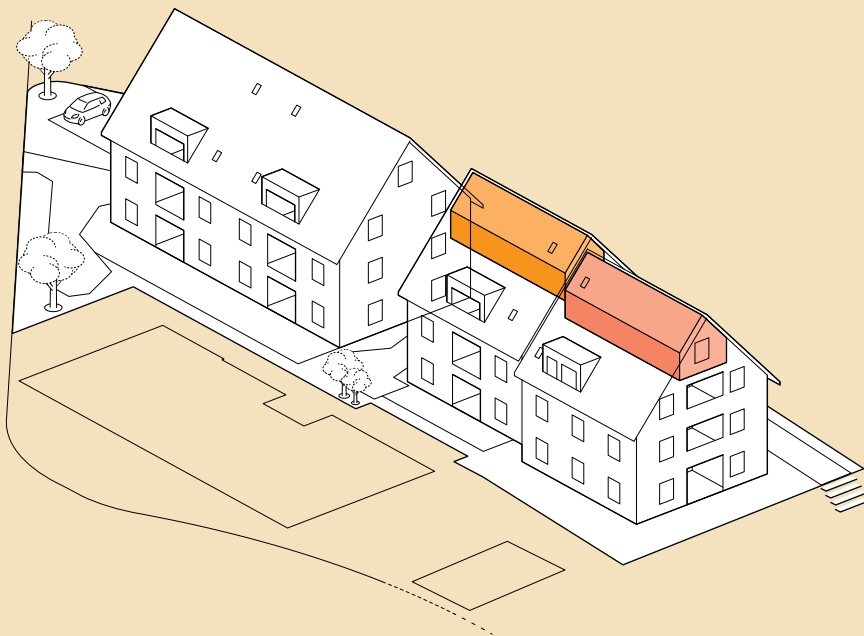




STERNEN
GUTENSWIL

Haus B

2. DACHGESCHOSS



B201 ■

B202 ■

