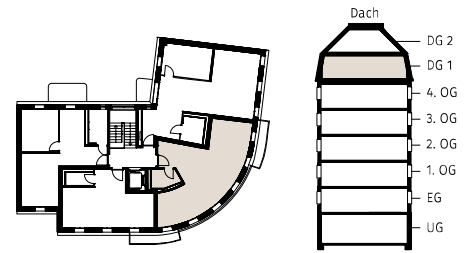


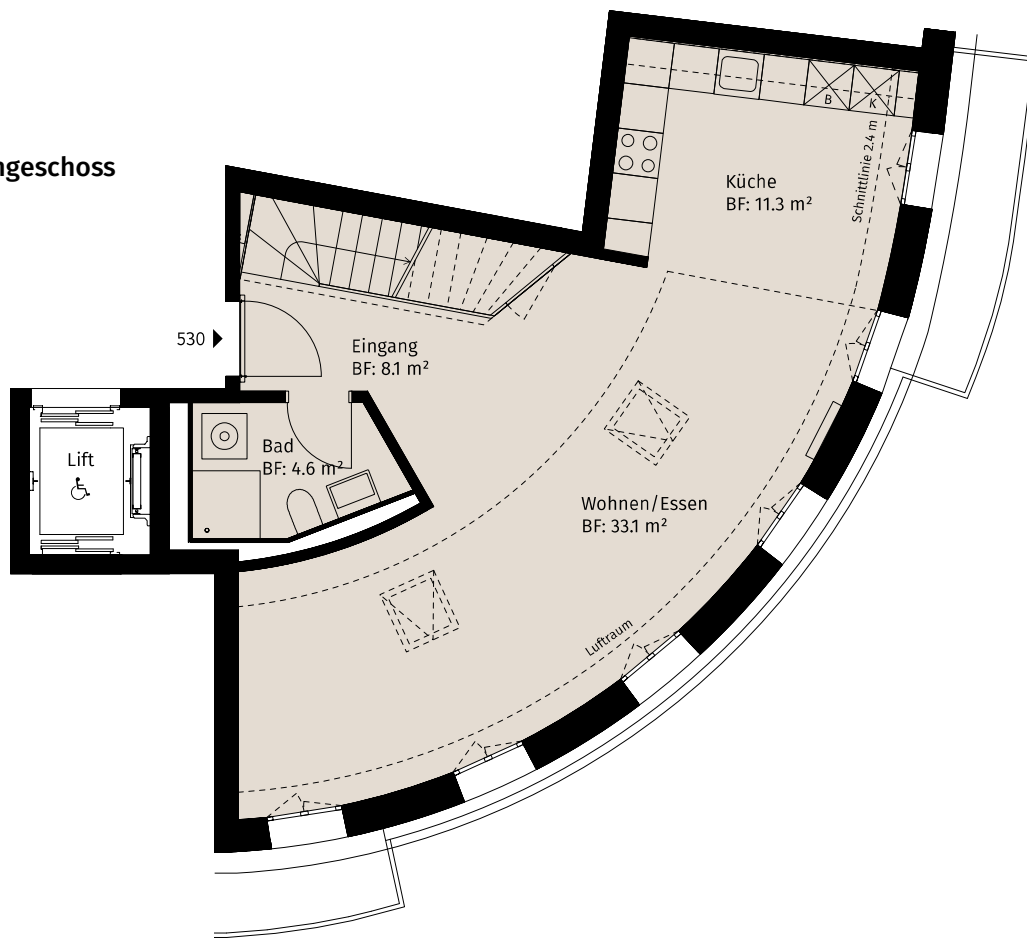
# BREMGARTNERSTRASSE 48, 8003 ZÜRICH

## 3.5-ZIMMER-WOHNUNG

Geschoss: 1./2. Dachgeschoss  
Whg-Nr.: 530  
HNF: 112 m<sup>2</sup>  
Dachterrasse (ANF): 32 m<sup>2</sup>

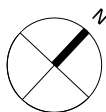


### 1. Dachgeschoss



0 1 2 3 4 5 m

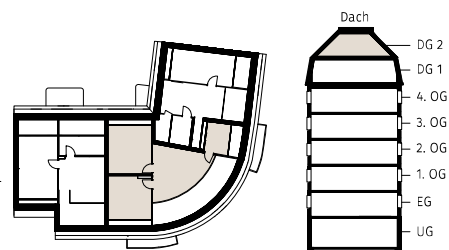
MASSSTAB 1:100



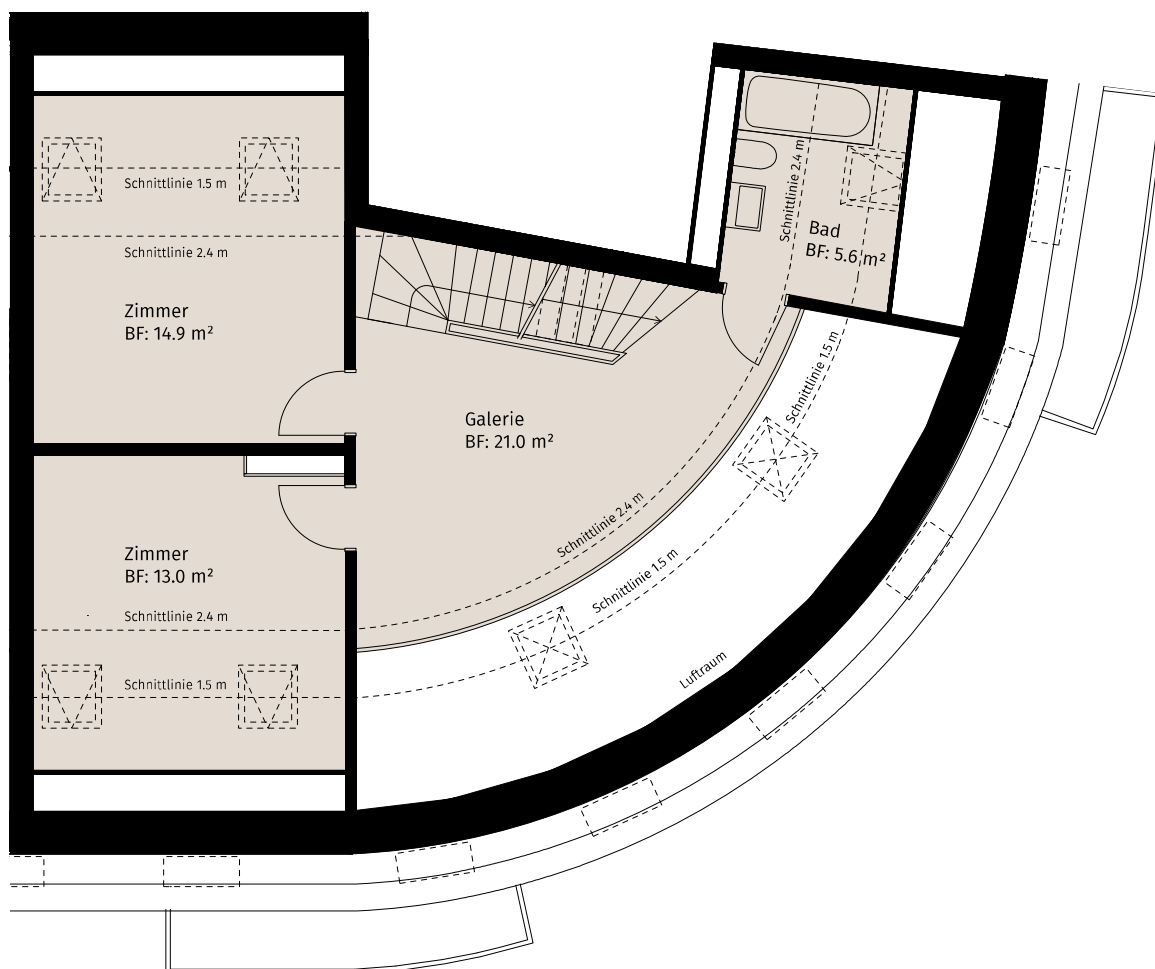
# BREMGARTNERSTRASSE 48, 8003 ZÜRICH

## 3.5-ZIMMER-WOHNUNG

Geschoss: 1./2. Dachgeschoss  
Whg-Nr.: 530  
HNF: 112 m<sup>2</sup>  
Dachterrasse (ANF): 32 m<sup>2</sup>

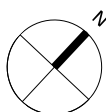


### 2. Dachgeschoss



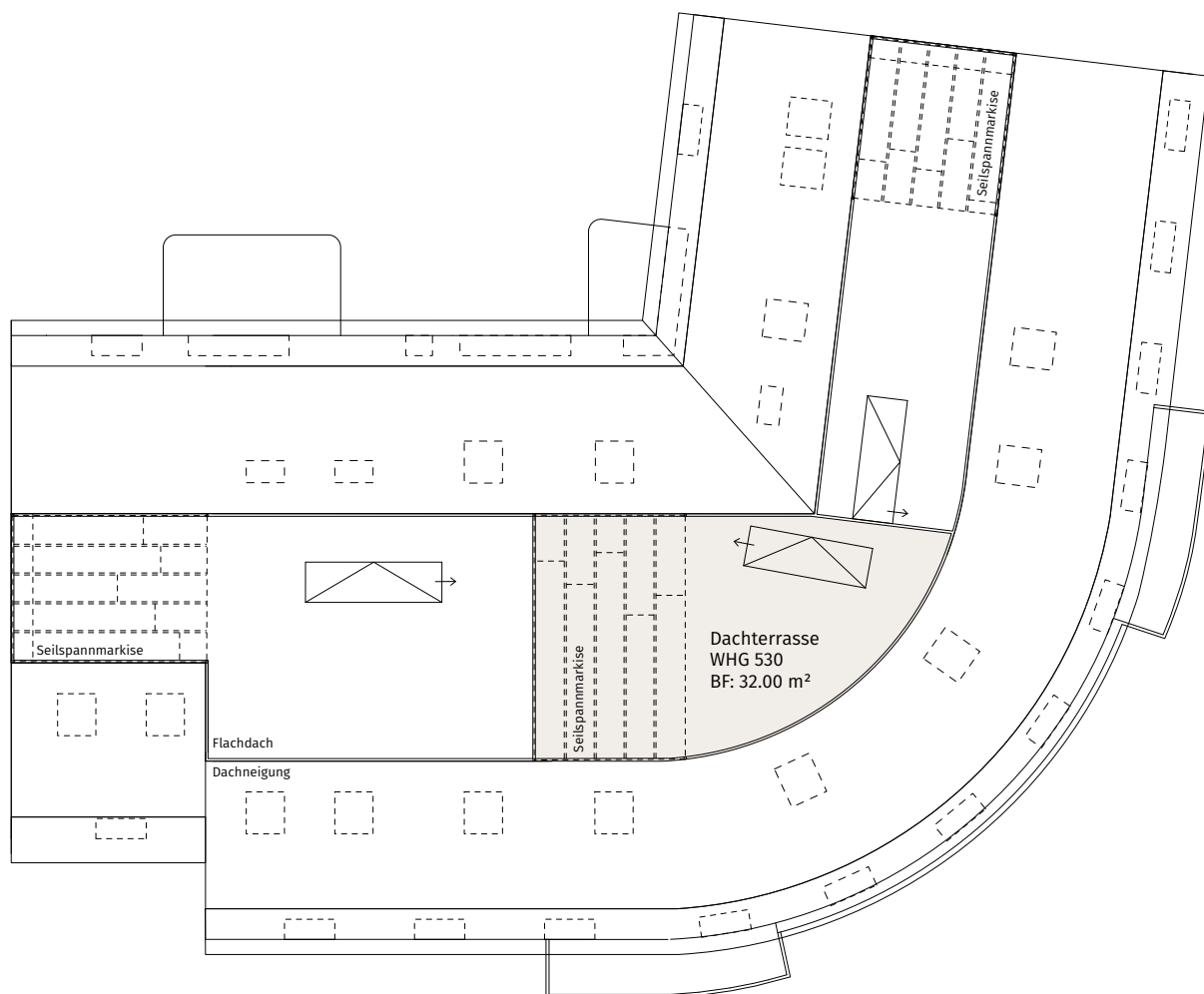
0 1 2 3 4 5 m

MASSSTAB 1:100



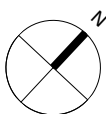
## DACHTERRASSE

Whg-Nr.: 530  
Dachterrasse (ANF): 32.00 m<sup>2</sup>



0 1 2 3 4 5 m

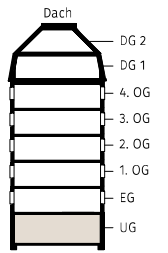
MASSSTAB 1:150



# BREMGARTNERSTRASSE 48, 8003 ZÜRICH

## KELLER

Geschoss: Untergeschoss



0 1 2 3 4 5 m

MASSSTAB 1:150

