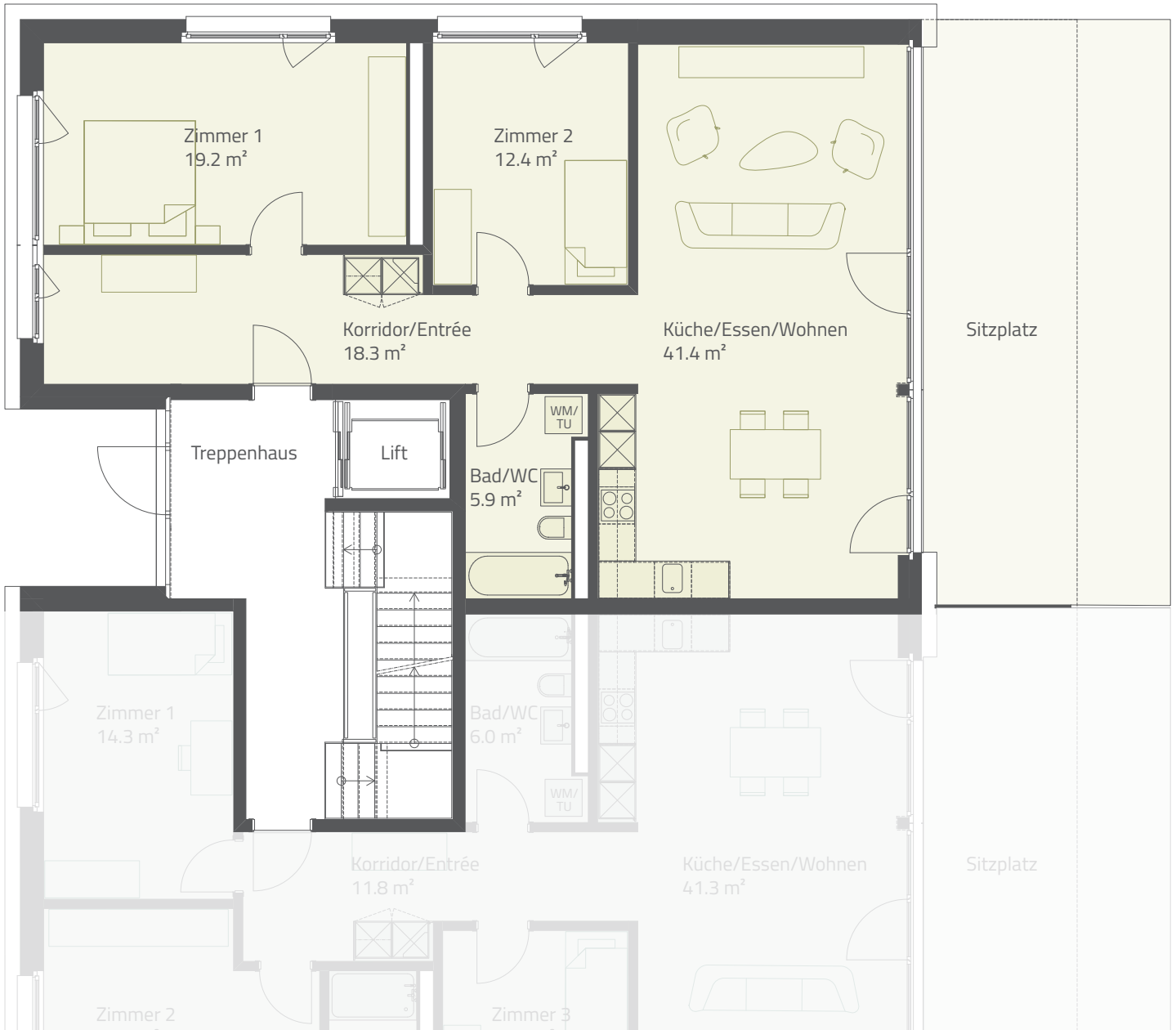
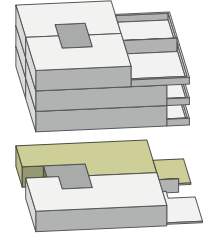
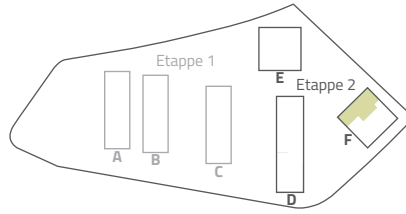


# BLÜMLISALPPARK

Wohn(t)raum4you in Biberist

3½-ZIMMER

Etage	EG
Wohnfläche	97.2 m <sup>2</sup>
Sitzplatz	vorhanden
Whg-Nr.	F.110



Masstab 1:100

0 1m 3m 5m



[www.blümlisalppark-biberist.ch](http://www.blümlisalppark-biberist.ch)