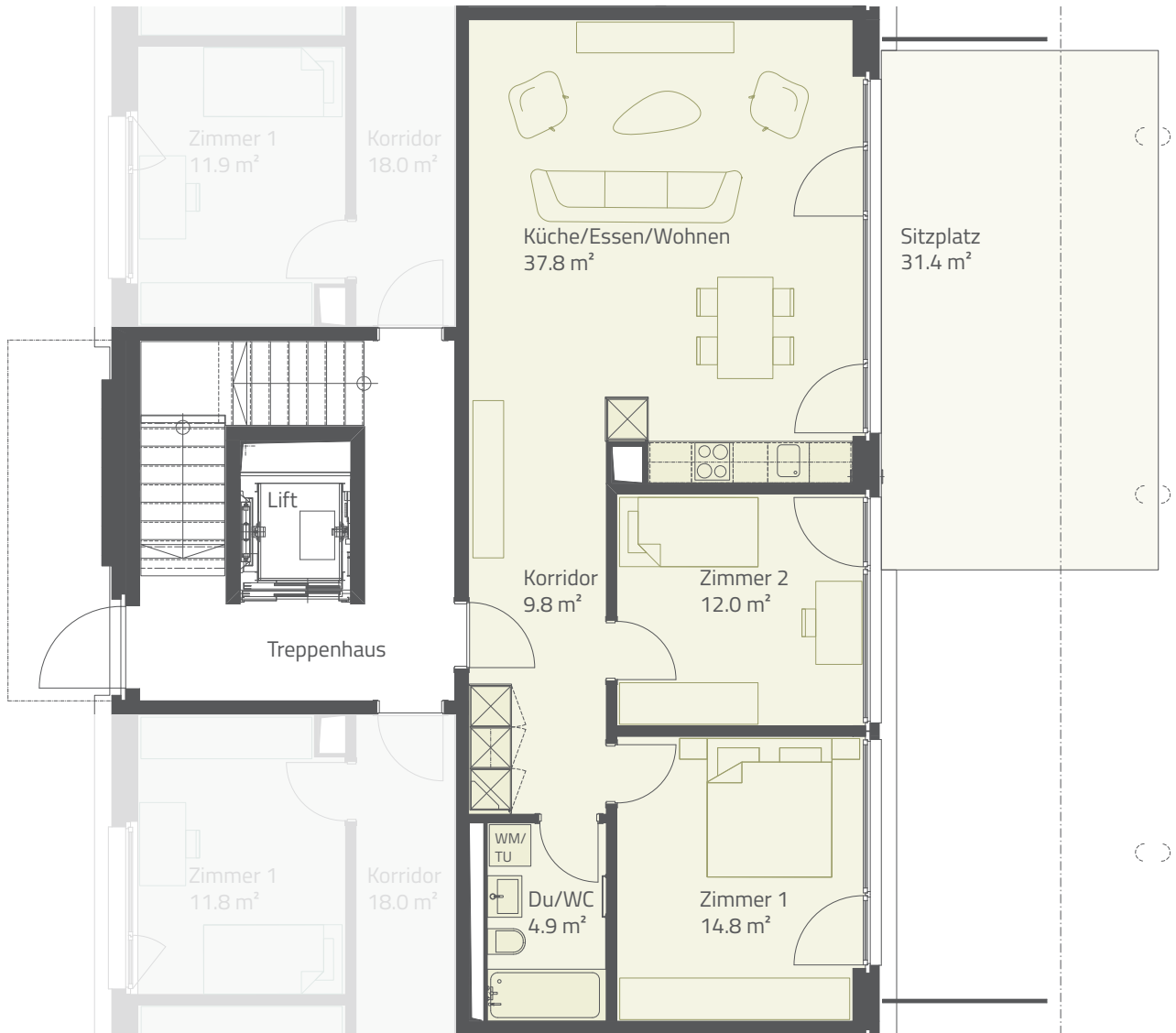
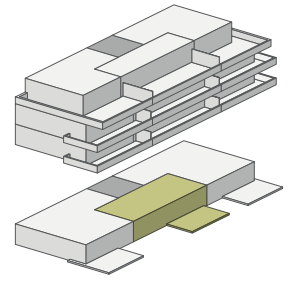
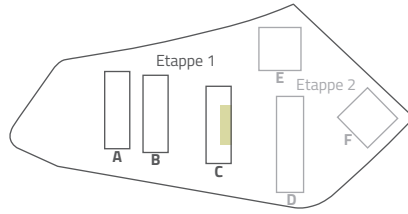


BLÜMLISALPPARK

Wohn(t)raum4you in Biberist

3½-ZIMMER

Etage	EG
Wohnfläche	79.3 m ²
Sitzplatz	31.4 m ²
Whg-Nr.	C.120



Masstab 1:100

0 1m 3m 5m



www.blümlisalppark-biberist.ch