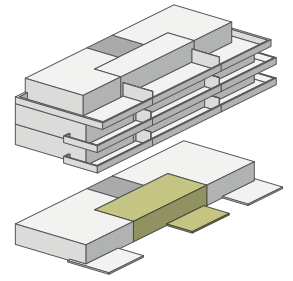
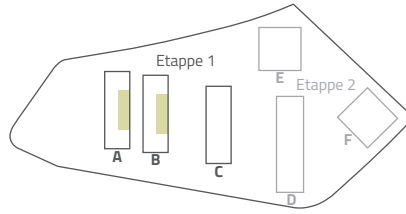


# BLÜMLISALPPARK

Wohn(t)raum4you in Biberist

3½-ZIMMER

Etage	EG/1. OG (A)
Wohnfläche	79.3 m <sup>2</sup>
Sitzplatz	31.4 m <sup>2</sup>
Whg-Nr.	A.220   B.120



Masstab 1:100

0 1m 3m 5m



[www.blümlisalppark-biberist.ch](http://www.blümlisalppark-biberist.ch)