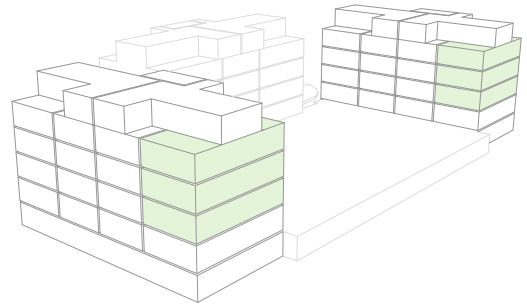


# 1. - 3. OBERGESCHOSS

## HAUS 27+19

WHG. : 1.204 / 1.304 / 1.404  
3.204 / 3.304 / 3.404

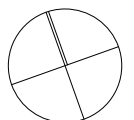
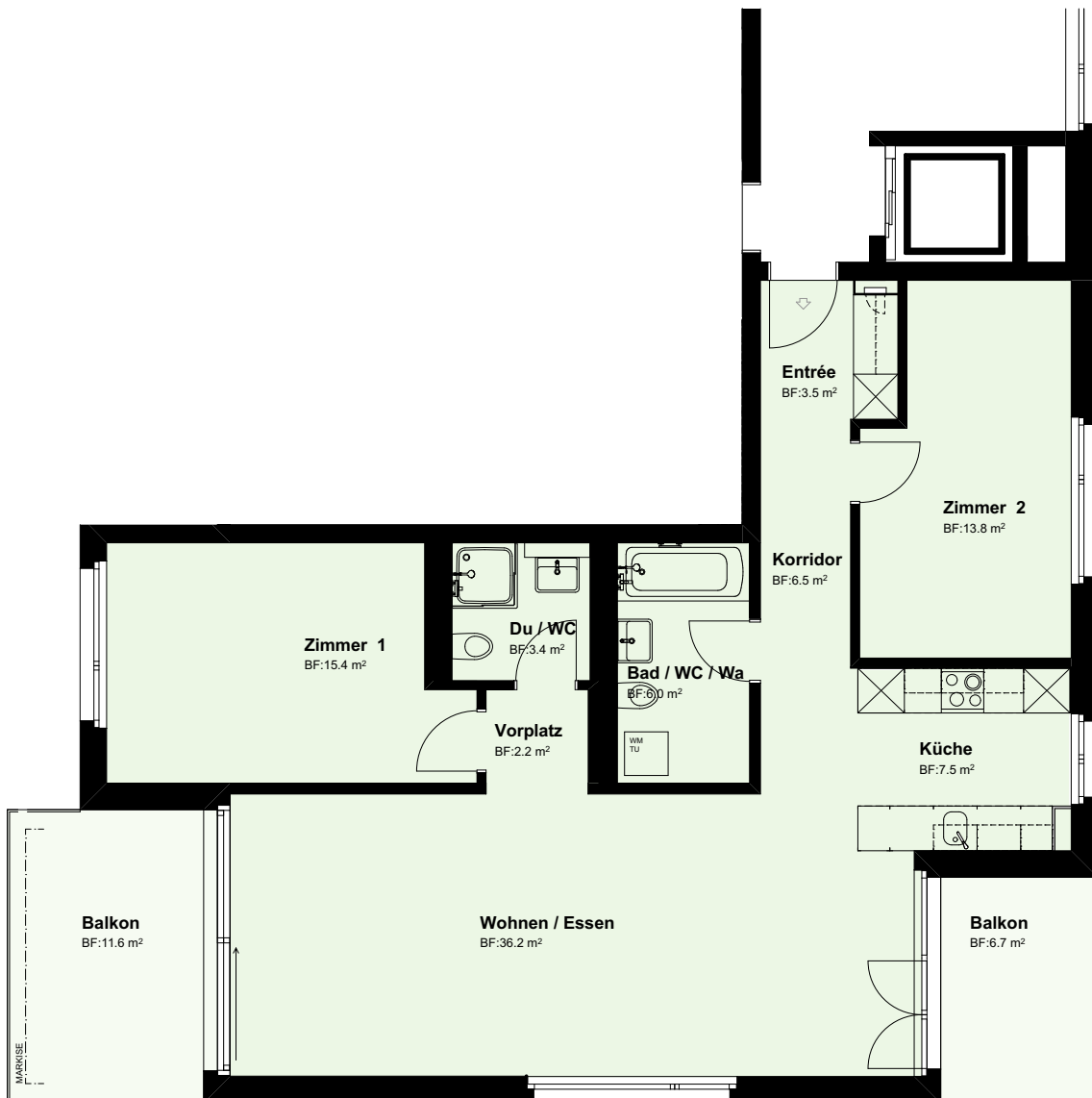


3½ Zimmer

Nettowohnfläche : 94.5 m<sup>2</sup>

Balkon : 18.3 m<sup>2</sup>

LAGE WOHNUNGEN



1:100