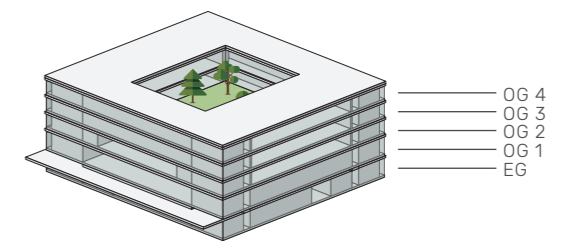
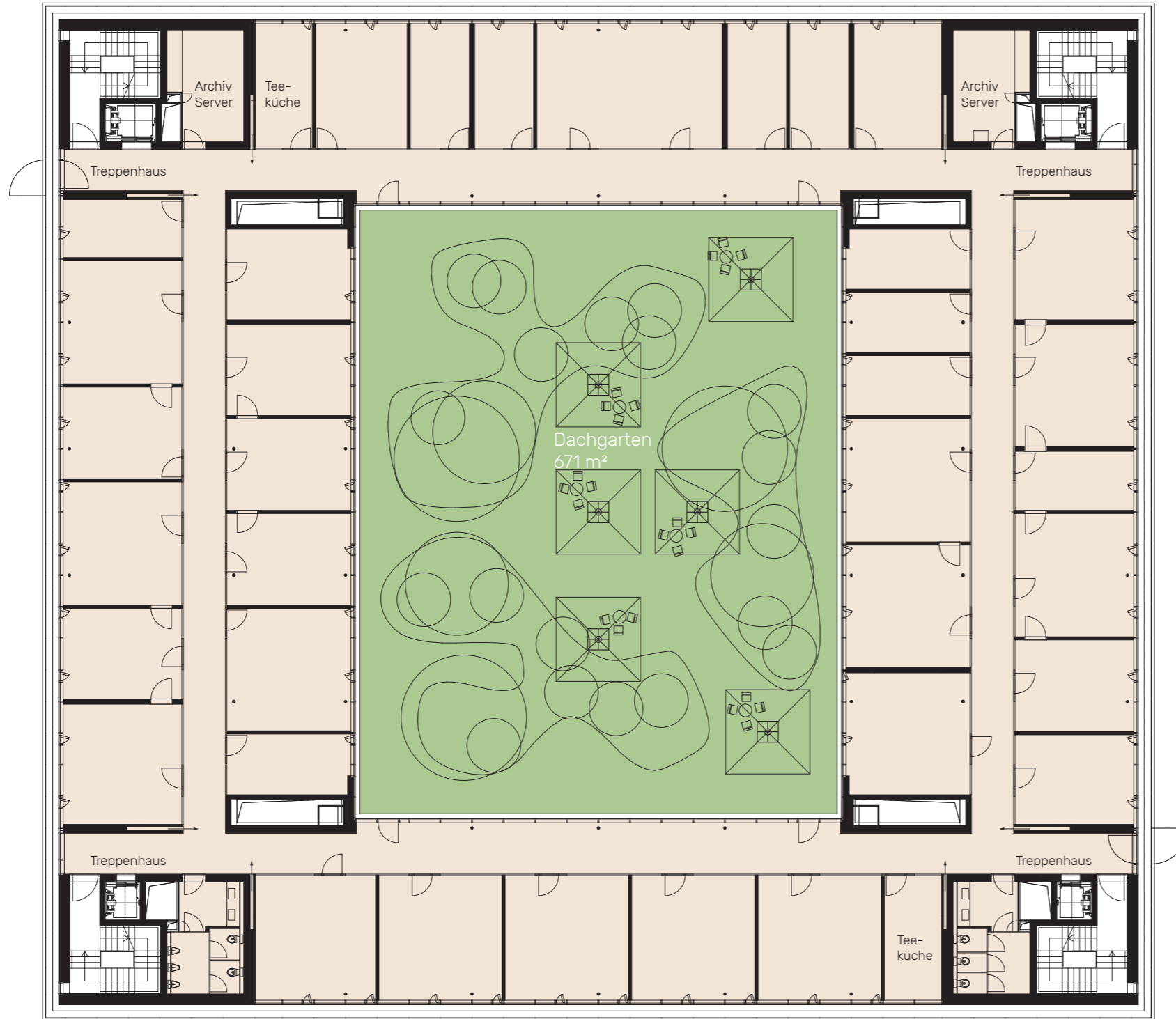


NEO

WINTERTHUR

63 PP





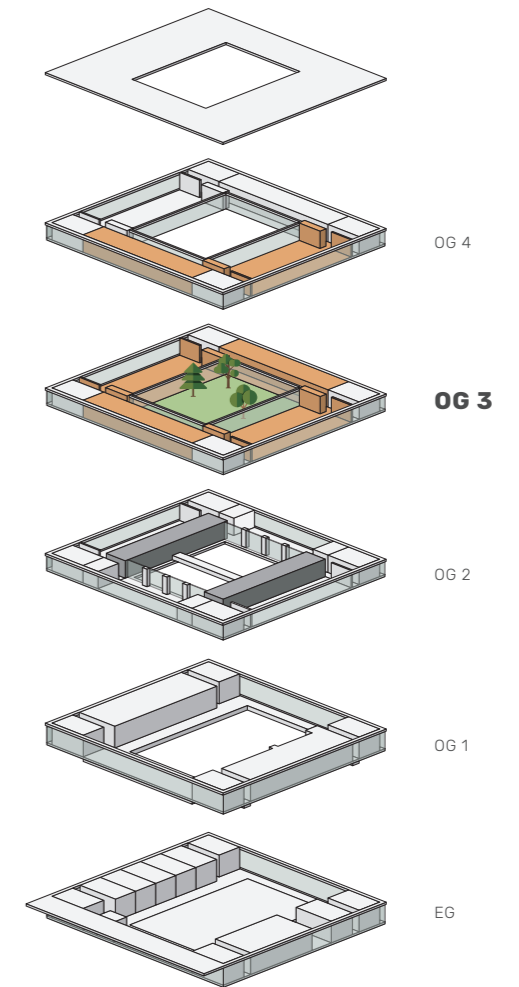
NEO

WINTERTHUR

VARIANTE B16

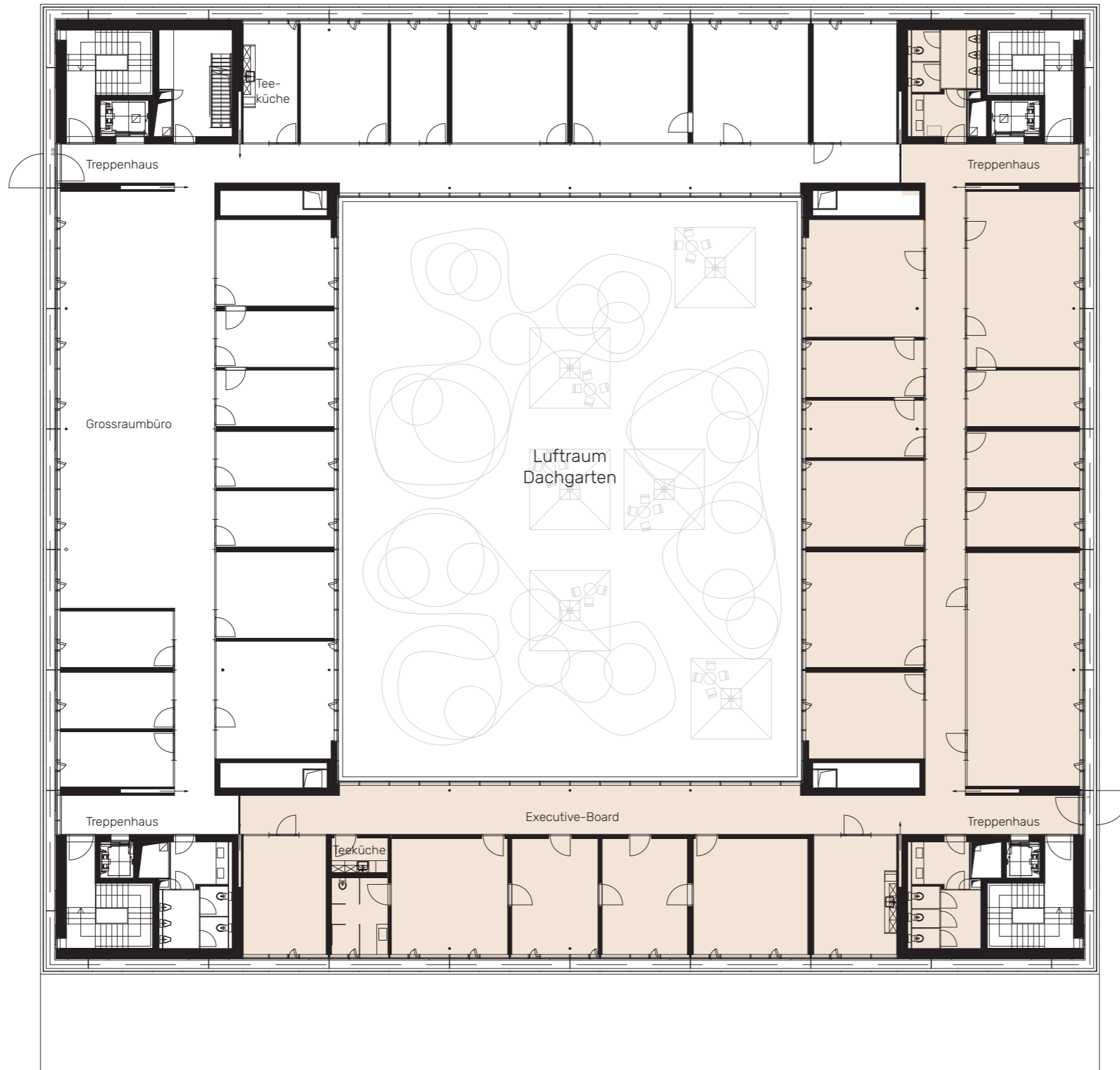
2'123 m²

Etage OG 4	701 m ²
Etage OG 3	1'422 m²
Dachgarten	671 m ²



■ BÜROFLÄCHEN





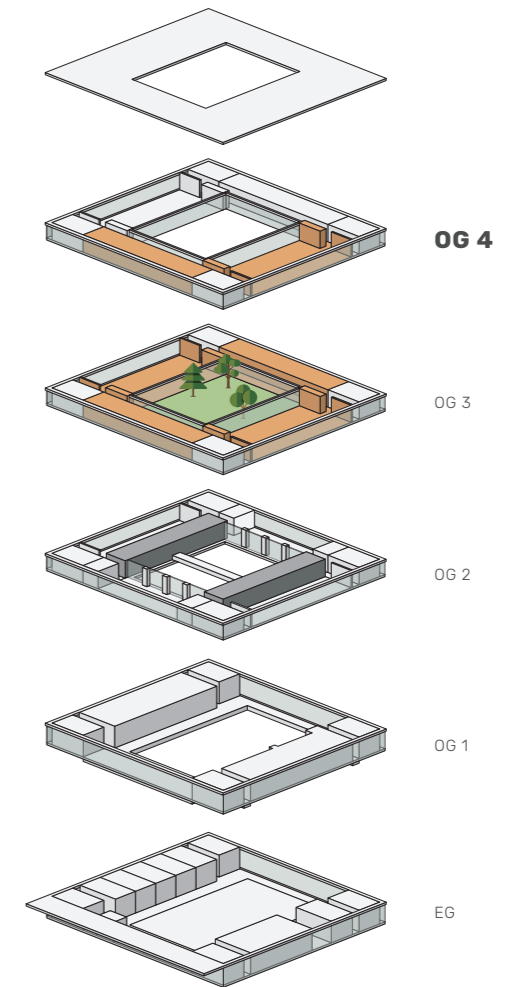
NEO

WINTERTHUR

VARIANTE B16

2'123 m²

Etage OG 4	701 m ²
Etage OG 3	1'422 m ²
Dachgarten	671 m ²



■ BÜROFLÄCHEN





NEO

WINTERTHUR

39 PP

Etage UG

LAGER

Lager Restaurant	20 m ²
Lagerraum 1	85 m ²
Lagerraum 2	85 m ²
Lagerraum AR	12 m ²
Lagerraum 3	111 m ²
Lagerraum 4	111 m ²

