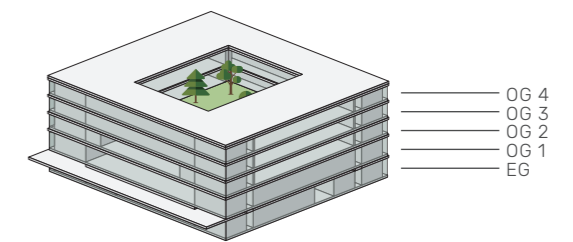
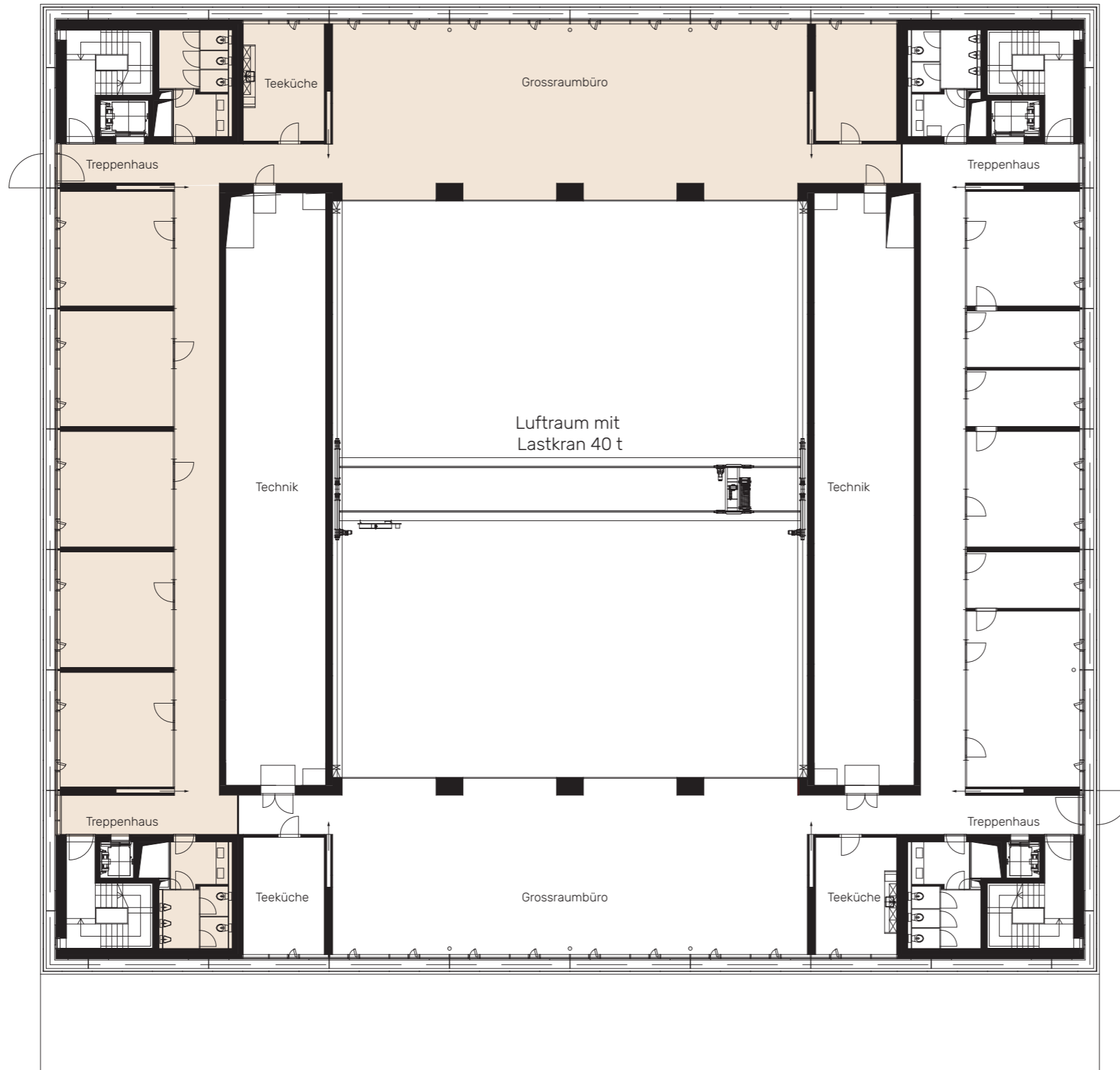


# NEO

WINTERTHUR

63 PP





# NEO

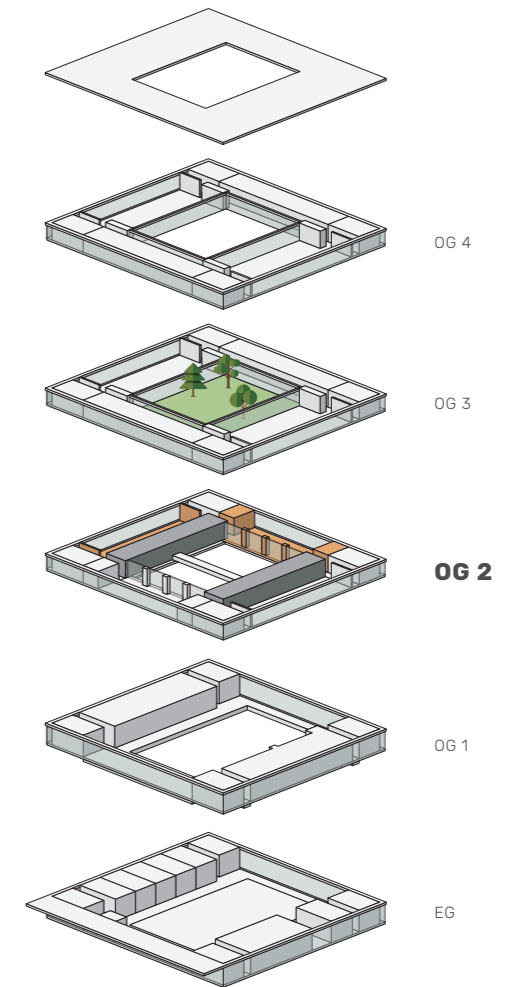
WINTERTHUR

VARIANTE B07

550 m<sup>2</sup>

Etage

OG 2



■ BÜROFLÄCHEN





# NEO

WINTERTHUR

39 PP

Etage UG

## LAGER

Lager Restaurant	20 m <sup>2</sup>
Lagerraum 1	85 m <sup>2</sup>
Lagerraum 2	85 m <sup>2</sup>
Lagerraum AR	12 m <sup>2</sup>
Lagerraum 3	111 m <sup>2</sup>
Lagerraum 4	111 m <sup>2</sup>

