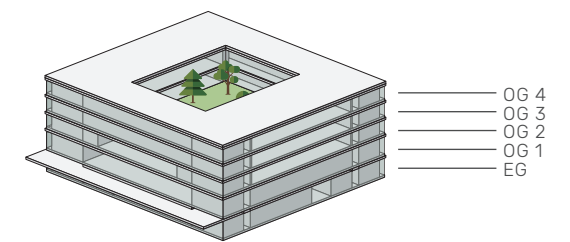
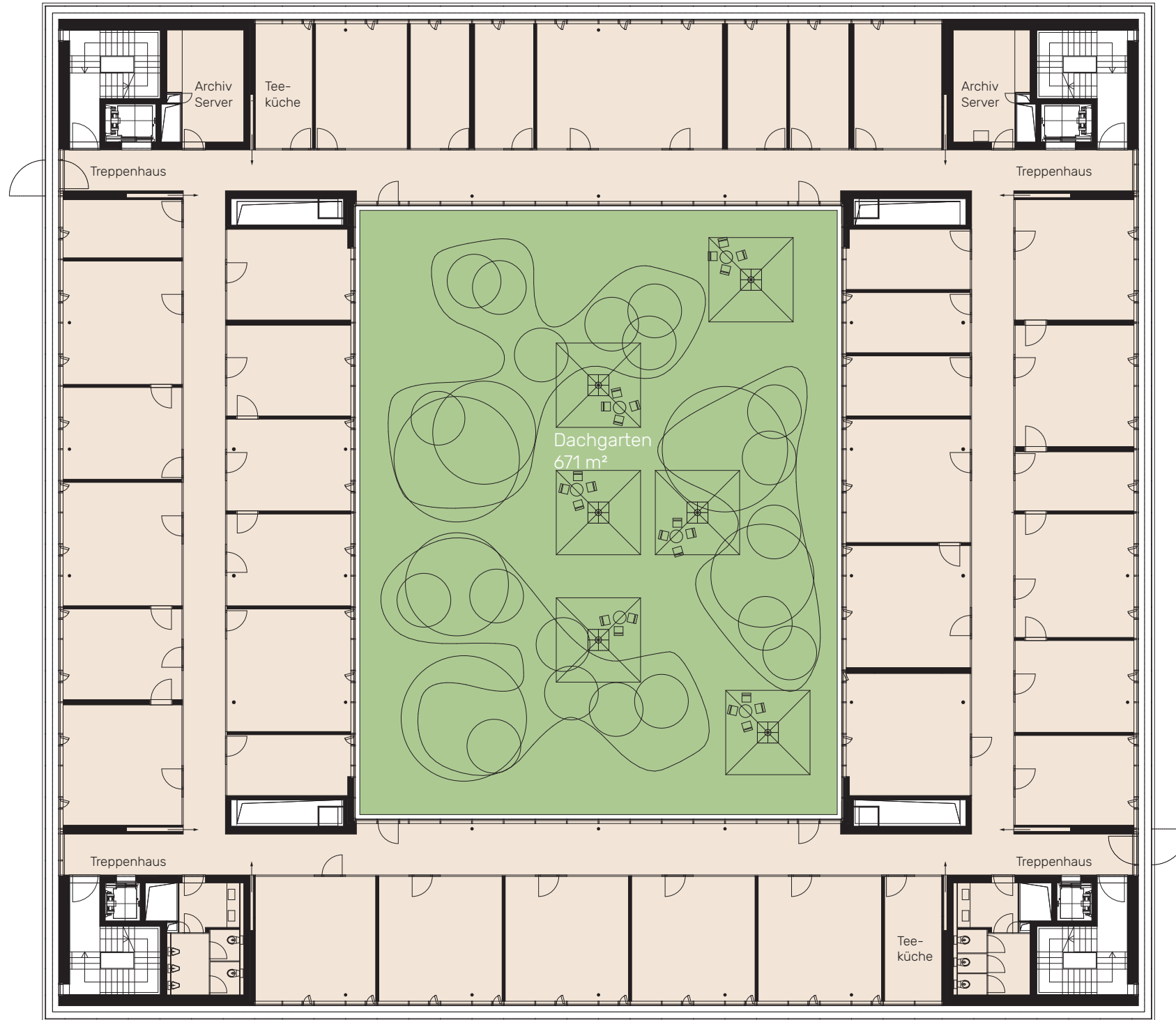


NEO

WINTERTHUR

63 PP





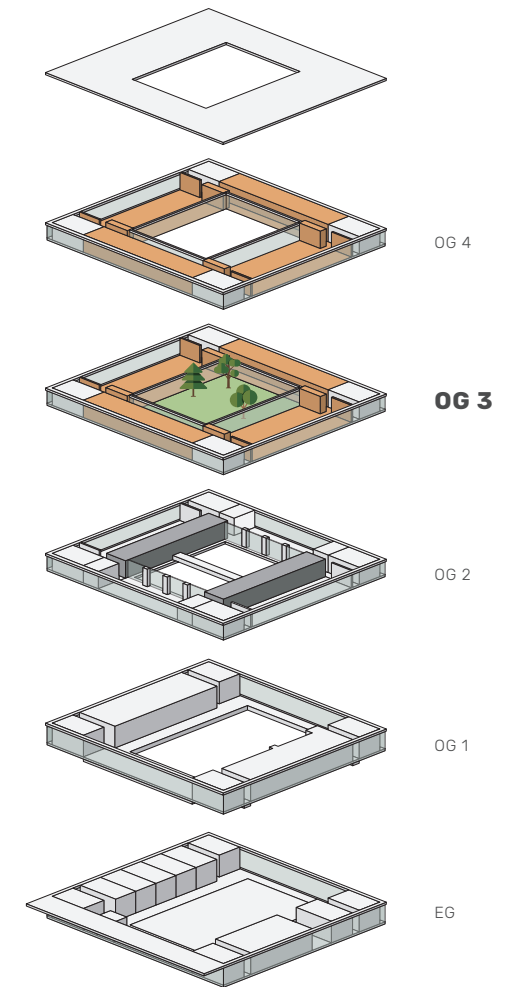
NEO

WINTERTHUR

VARIANTE B05

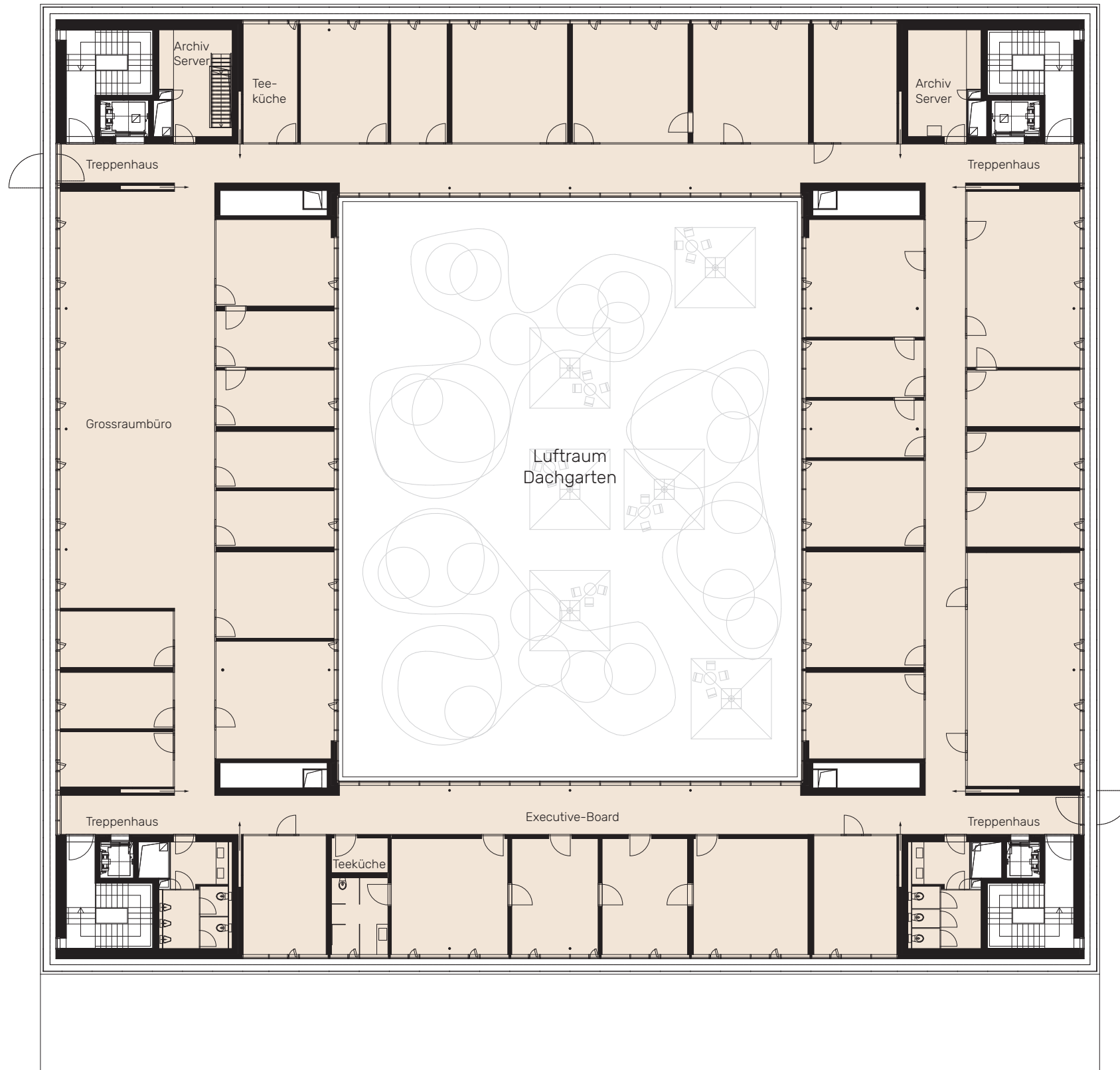
2'838 m²

Etage OG 4	1'416 m ²
Etage OG 3	1'422 m ²
Dachgarten	671 m ²



■ BÜROFLÄCHEN



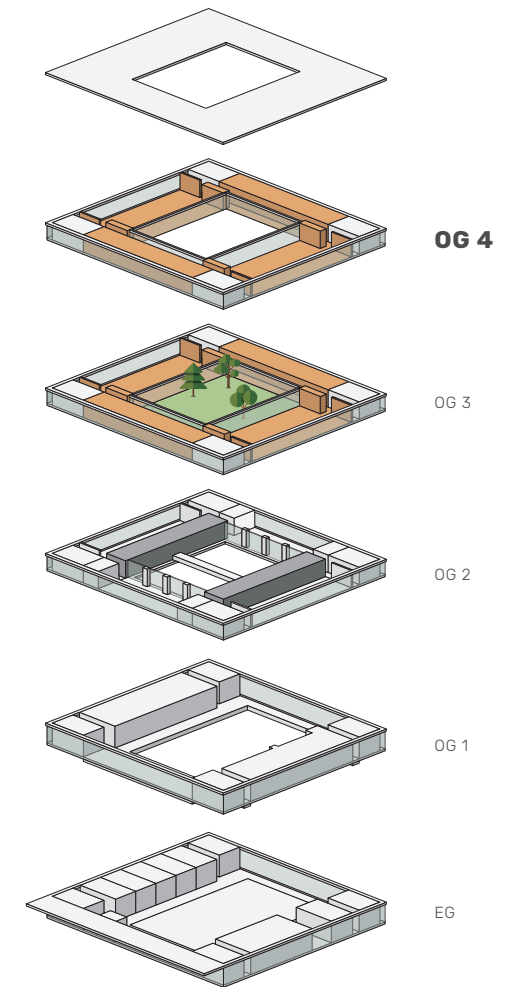


NEO

WINTERTHUR

VARIANTE B05
2'838 m²

Etage OG 4	1'416 m ²
Etage OG 3	1'422 m ²
Dachgarten	671 m ²



■ BÜROFLÄCHEN





NEO

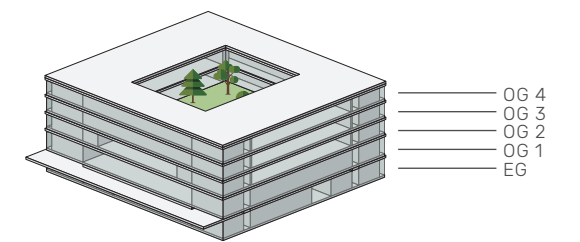
WINTERTHUR

39 PP

Etage UG

LAGER

Lager Restaurant	20 m ²
Lager Raum 1	85 m ²
Lager Raum 2	85 m ²
Lager Raum AR	12 m ²
Lager Raum 3	111 m ²
Lager Raum 4	111 m ²



M 1:250 0 1 5 10M

Bei unskaliertem Ausdruck auf DIN A 3

