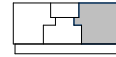


# 1. ETAPPE

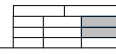
## HAUS 1 | 1. + 2. OG |

WHG. : 203 / 303

HAUS 1



HAUS 2

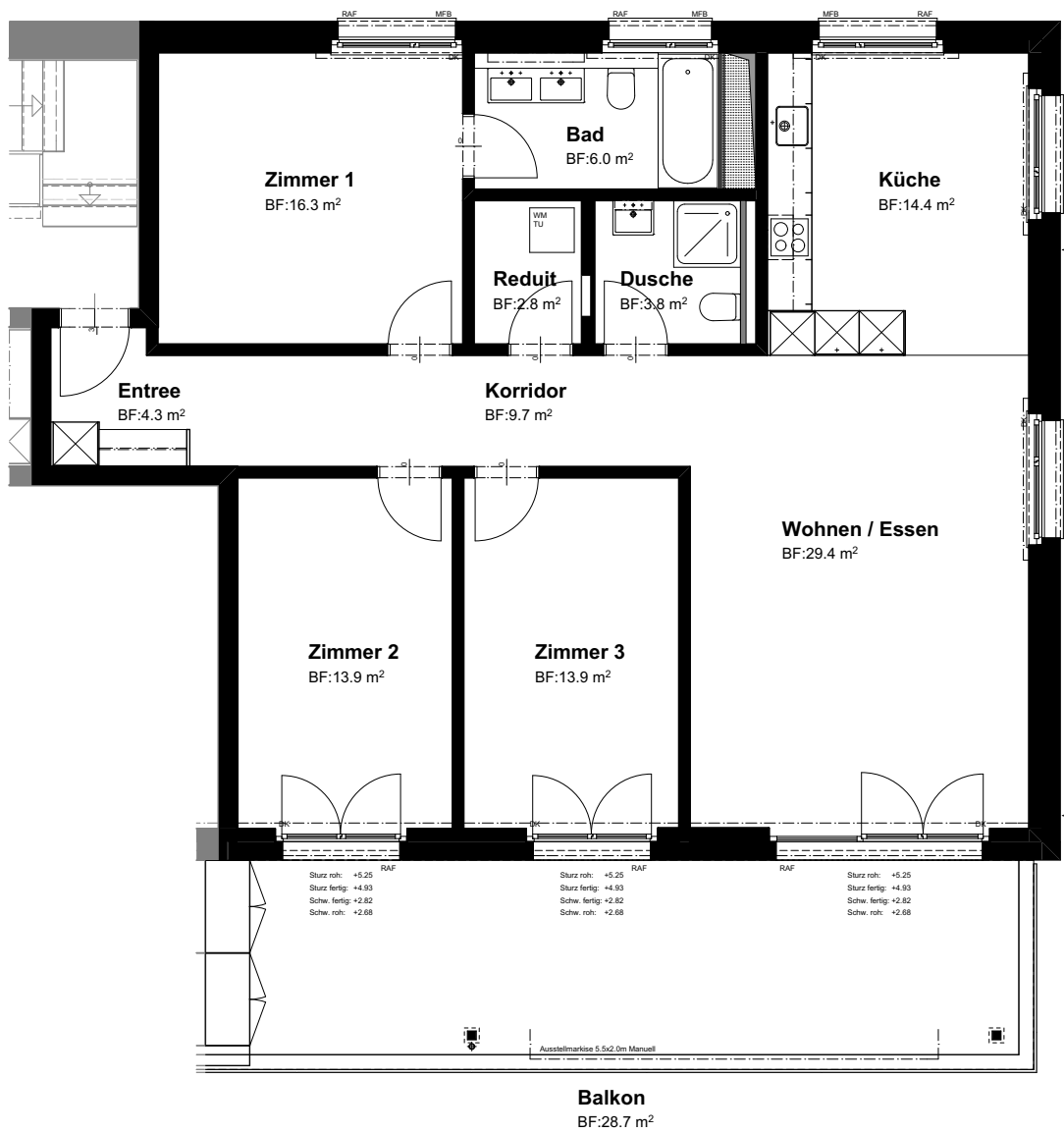


SCHNITT

### 4½ Zimmer

Nettowohnfläche : 114.5 m<sup>2</sup>

Balkon : 28.7 m<sup>2</sup>



0 5m

1 : 100

